

AUSTRALIAN AMALGAMATED TERMINALS PTY LTD (AAT)

BI-ANNUAL COMPLIANCE REPORT
DATE OF REPORT: 17th July, 2023

REPORT PERIOD: 1st JANUARY 2023 TO 30TH JUNE 2023

KPI	Port Kembla			Brisbane		
	Average time	Explanation	Average time	Explanation		
KPI 1 Truck Turnaround Time Average time spent at the terminal picking up or delivering cargo, measured from gate entry through to departure from terminal	Quarter 1		Quarter 1			
	Automobiles - Qube	48 mins	Automobiles - Qube	32 mins		
	Automobiles - Linx	45 mins	Automobiles - Linx	28 mins		
	Breakbulk - Qube	1 hr 17 mins	Automobiles - TML	N/A	Did not handle PCC vessels	
	Breakbulk - Linx	1 hr 00 mins	Breakbulk - Qube	1 hr 8 mins		
			Breakbulk - Linx	0 hr 50 mins		
			Breakbulk - TML	0 hr 58 mins		
	Quarter 2		Quarter 2			
	Automobiles - Qube	43 mins	Automobiles - Qube	33 mins		
	Automobiles - Linx	48 mins	Automobiles - Linx	31 mins		
	Breakbulk - Qube	1 hr 11 mins	Automobiles - TML	N/A	Did not handle PCC vessels	
	Breakbulk - Linx	1 hr 03 mins	Breakbulk - Qube	1 hr 02 mins		
			Breakbulk - Linx	0 hr 51 mins		
			Breakbulk - TML	1 hr 15 mins		
KPI 2 Yard Dwell Time - Imports	Average time	Explanation	Quarter 1	Average time	Explanation	
	Quarter 1		Automobiles - Qube	181 hrs 22 mins		
	Automobiles - Qube	211 hrs 44 mins	Automobiles - Linx	83 hrs 57 mins		
			Automobiles - TML	N/A	Did not handle PCC vessels	
	Automobiles - Linx	387 hrs 56 mins	Breakbulk - Qube	105 hrs 19 mins		
	Breakbulk - Qube	256 hrs 41 mins	Breakbulk - Linx	86 hrs 27 mins		
	Breakbulk - Linx	728 hrs 56 mins	Breakbulk - TML	62 hrs 15 mins		
		Import dwell time have increased due to quarantine cleaning requirements increasing across the auto industry				
	Quarter 2		Quarter 2			
	Automobiles - Qube	138 hrs 03 mins	Automobiles - Qube	140 hrs 25 mins	high level of quartine held vehicles	
	Automobiles - Linx	176 hrs 40 mins	Automobiles - Linx	79 hrs 01 mins		
	Breakbulk - Qube	413 hrs 08 mins	Automobiles - TML	0 hrs 0 mins	Did not handle PCC vessels	
	Breakbulk - Linx	320 hrs 51 mins	Breakbulk - Qube	109 hrs 28 mins		
		Extended storage cargo. Cargo remained onsite	Breakbulk - Linx	75 hrs 30 mins		
		Breakbulk - TML	81 hrs 06 mins			
KPI 3 Yard Dwell Time - Exports Average time export cargo units stayed at the designated cargo pick-up area of the terminal waiting to be loaded onto a vessel, once the cargo is ready to be loaded.	Average time	Explanation	Quarter 1	Average time	Explanation	
	Quarter 1		Automobiles - Qube	129 hrs 21 mins		
	Automobiles - Qube	200 hrs 56 mins	Automobiles - Linx	243 hrs 18 mins		
	Automobiles - Linx	276 hrs 26 mins	Automobiles - TML	0 hrs 0 mins	Did not handle PCC vessels	
	Breakbulk - Qube	511 hrs 57 mins	Breakbulk - Qube	486 hrs 15 mins	Due to congestion, AAT experienced significant delays to inbound vessels which impacted transhipment cargo (export cargo)	
	Breakbulk - Linx	624 hrs 49 mins	Breakbulk - Linx	127 hrs 57 mins		
			Breakbulk - TML	261 hrs 20 mins		
	Quarter 2		Quarter 2			
	Automobiles - Qube	318 hrs 58 mins	Automobiles - Qube	134 hrs 14 mins		
	Automobiles - Linx	276 hrs 37 mins	Automobiles - Linx	177 hrs 05 mins		
	Breakbulk - Qube	629 hrs 19 mins	Automobiles - TML	0 hrs 0 mins	Did not handle PCC vessels	
	Breakbulk - Linx	497 hrs 00 mins	Breakbulk - Qube	203 hrs 38 mins		
		Extended Storage project cargo onsite	Breakbulk - Linx	172 hrs 15 mins		
			Breakbulk - TML	123 hrs 31 mins		
KPI 4 Berthing Allocation Changes Number of incidents where there was a delay in start of stevedoring operations due to deviation between planned allocation of berth and actual allocation, where AAT was responsible for such deviation.	Number of Incidents	Explanation	Number of Incidents	Explanation		
	Quarter 1		Quarter 1			
	Qube	Zero	Qube	Zero		
	Linx	Zero	Linx	Zero		
			TML	Zero		
	Quarter 2		Quarter 2			
	Qube	Zero	Qube	Zero		
	Linx	Zero	Linx	Zero		
			TML	Zero		
KPI 5 Mooring Services Number of incidents where there was a delay in the mooring of vessels due to a deviation between planned berth allocation and actual allocation, where AAT was responsible for such deviation.	Number of Incidents	Explanation	Number of Incidents	Explanation		
	Quarter 1		Quarter 1			
	Qube	Zero	Qube	Zero		
	Linx	Zero	Linx	Zero		
			TML	Zero		
	Quarter 2		Quarter 2			
	Qube	Zero	Qube	Zero		
	Linx	Zero	Linx	Zero		
			TML	Zero		
KPI 6 Allocation of first point of rest area Data showing, for each cargo shipment:	Refer Attachment A		Refer Attachment A			

a) berth allocated to vessel b) allocated storage area in the Terminal Layout Plan for the cargo's This data can be set out in an Attachment to this Compliance Report						
KPI 7 Equipment Availability Number of deviations between AAT equipment requested by stevedore or by shipping line and actual machinery provided (including standard of equipment, age, type and capacity)		Number of Incidents	Explanation		Number of Incidents	Explanation
	Quarter 1			Quarter 1		
	Qube	Zero		Qube	Zero	
	Linx	Zero		Linx	Zero	
				TML	Zero	
	Quarter 2			Quarter 2		
	Qube	Zero		Qube	Zero	
	Linx	Zero		Linx	Zero	
				TML	Zero	
KPI 8 Mechanical Support Average time lost in excess of one hour due to failure of AAT in providing mechanical breakdown support, reported from the time Mechanical Engineer officially notified to the time the issue was resolved.		Average time lost	Explanation		Average time lost	Explanation
	Quarter 1			Quarter 1		
	Qube	Zero		Qube	Zero	
	Linx	Zero		Linx	Zero	
				TML	Zero	
	Quarter 2			Quarter 2		
	Qube	Zero		Qube	5 hrs	
	Linx	Zero		Linx	Zero	
				TML	Zero	
KPI 9 Cargo dwell time over free time/long terms storage Time cargo units stay over free time, excluding Customs, DAFF and customer hold.		Units/percentage	Explanation		Units/percentage	Explanation
	Quarter 1	Services to Qube		Quarter 1	Services to Qube	
	Services to Qube			Services to Qube		
	Total Cargo Units	64,389		Total Cargo Units	71,019	
	Units staying over free time	31,559		Units staying over free time	21,993	
	Units over free time due Customs/Daff or customer	117		Units over free time due Customs/Daff or customer	154	
	Units staying over free time excluding Customs etc. as percentage of total units	49%		Units staying over free time excluding Customs etc. as percentage of total units	31%	
	Services to Linx			Services to Linx		
	Total Cargo Units	37,735		Total Cargo Units	85,940	
	Units staying over free time	16,651		Units staying over free time	4,709	
	Units over free time due Customs/Daff or customer	4		Units over free time due Customs/Daff or customer	33	
	Units staying over free time excluding Customs etc. as percentage of total units	44%		Units staying over free time excluding Customs etc. as percentage of total units	5%	
	Quarter 2			Services to TML		
	Services to Qube			Total Cargo Units	7,410	
	Total Cargo Units	72,758		Units staying over free time	2,035	
	Units staying over free time	29,959		Units over free time due Customs/Daff or customer	33	
	Units over free time due Customs/Daff or customer	114		Units staying over free time excluding Customs etc. as percentage of total units	27%	
	Units staying over free time excluding Customs etc. as percentage of total units	41%				
	Services to Linx			Quarter 2		
	Total Cargo Units	25,493		Services to Qube		
	Units staying over free time	9,171		Total Cargo Units	81,683	
	Units over free time due Customs/Daff or customer	96		Units staying over free time	15,136	
	Units staying over free time excluding Customs etc. as percentage of total units	36%		Units over free time due Customs/Daff or customer	214	
				Units staying over free time excluding Customs etc. as percentage of total units	18%	
				Services to Linx		
				Total Cargo Units	53,809	
				Units staying over free time	4,371	
				Units over free time due Customs/Daff or customer	224	
				Units staying over free time excluding Customs etc. as percentage of total units	8%	
				Services to TML		
			Total Cargo Units	2,059		
			Units staying over free time	100		
			Units over free time due Customs/Daff or customer	0		
			Units staying over free time excluding Customs etc. as percentage of total units	5%		
KPI 10 Confidentiality and ring-fencing Number of complaints received by AAT concerning non-compliance with Clause		Number of Complaints	Explanation			Explanation
	Quarter 1			Quarter 1		
	Complaints for Non-Compliance with Clause 6			Complaints for Non-Compliance with Clause 6		
	Services to Qube	Zero		Services to Qube	Zero	
	Services to Linx	Zero		Services to Linx	Zero	

Concerning non-compliance with clause 6 of the Undertaking Number of instance of breaches of Clause 6 AAT's response to the complaints and/or breaches	Breaches of Clause 6 Clause 6			Services to TML	Zero	
	Services to Qube	Zero		Breaches of Clause 6 Clause 6		
	Services to Linx	Zero		Services to Qube	Zero	
				Services to Linx	Zero	
	Quarter 2			Services to TML	Zero	
	Complaints for Non-Compliance with Clause 6			Quarter 2		
	Services to Qube	Zero		Complaints for Non-Compliance with Clause 6		
	Services to Linx	Zero		Services to Qube	Zero	
	Breaches of Clause 6 Clause 6			Services to Linx	Zero	
	Services to Qube	Zero		Services to TML	Zero	
	Services to Linx	Zero		Breaches of Clause 6 Clause 6		
				Services to Qube	Zero	
				Services to Linx	Zero	
				Services to TML	Zero	
KPI 11 Complaints Number of complaints raised under the Price Dispute Resolution Process and the Non-Price Resolution Process under the Undertaking		Number of Complaints	Explanation		Number of Complaints	Explanation
	Quarter 1			Quarter 1		
	Complaints Under Price and non-Price Dispute Resolution Process			Complaints Under Price and non-Price Dispute Resolution Process		
	Services to Qube	Zero		Services to Qube	Zero	
	Services to Linx	Zero		Services to Linx	Zero	
	Details of complaint and outcome	Zero		Services to TML	Zero	
				Details of complaint and outcome	Zero	
	Quarter 2					
	Complaints Under Price and non-Price Dispute Resolution Process			Quarter 2		
	Services to Qube	Zero		Complaints Under Price and non-Price Dispute Resolution Process		
	Services to Linx	Zero		Services to Qube	Zero	
	Details of complaint and outcome	Zero		Services to Linx	Zero	
				Services to TML	Zero	
				Details of complaint and outcome	Zero	

PART B: TERMINAL LAYOUT PLAN FOR EACH TERMINAL
See attachment Part B

PART C: TERMINAL USERS IN WHICH QUBE OR A QUBE RELATED ENTITY HAS AN INTEREST

See attachment Part C

Attachment A

KPI 6

Allocation of first point of rest

Fisherman Islands

Jan 1 – Jun 30, 2023

JANUARY

NUMBER	DATE	STEVE-DORE	VESSEL	VOYAGE	STARTING SHIFT	BERTH #	BERTH DELAY	LAYDOWN	MACHINERY REQUEST RECEIVED	MACHINERY REQUEST FILLED	MACHINERY ISSUES	NOTES
1	0200/1	QP	AAL SHANGHAI	22009	DAY	2	48HRS	OS, F, OTP	YES	YES	NIL	Awaiting departure of Tonga Chief (Swire - TML) & 1 other LOLO that was alongside.
2	0800/1	QP	GRAND MARK	2	DAY	1	136HRS	A, C & D	YES	YES	NIL	Awaiting departure of Morning Crystal (Armacup - QUBE) & 4 other PCCs ahead in queue.
3	1930/4	LINX	NEW CENTURY 2	176	EVE	1	80HRS	D, L & M	YES	YES	NIL	Awaiting departure of Grand Mark (MOL - QUBE) & 2 other PCCs ahead in queue.
4	0300/5	LINX	O.T. IDEAL	17	EVE	3	NIL	B	YES	YES	NIL	
5	0400/6	QP	EMERALD ACE	82	EVE	1	72HRS	A & C	YES	YES	NIL	Awaiting departure of New Century 2 (TFS - Linx) & 2 other PCC ahead in queue.
6	0700/6	TML	ARKADIA	2211S/2301N	DAY	2	24HRS	B	YES	YES	NIL	Awaiting departure of Melanesian Chief (Swire - TML) & 1 PCC that was alongside.
7	1200/6	QP	TAI XING	HF2203	MIDNIGHT	3	NIL	UHOOK	YES	YES	NIL	
8	6-Jan	TML	MELANESIAN CHIEF	Z2301N	DAY	2	NIL	B	YES	YES	NIL	
9	0700/7	QP	THERMOPYLAE	EF226	DAY	1	160HRS	C	YES	YES	NIL	Awaiting departure of Eridanus Leader (NYK - Linx) & 4 other PCCs ahead in queue.
10	0800/9	TML	SAMOA CHIEF	2301S/2301N	DAY	2	48HRS	B	YES	YES	NIL	Awaiting departure of Arkadia (Swire - TML).
11	1800/8	QP	GREBE ARROW	2205	DAY	3	56HRS	OS, J	YES	YES	NIL	Awaiting departure of Tai Xing (BWS - QP).
12	0600/10	QP	TURANDOT	2281	DAY	1	48HRS	A, C & D	YES	YES	NIL	Delayed berthing due to yard congestion.
13	1400/10	QP	ATLAS WIND	00002	DAY	3	80HRS	F	YES	YES	NIL	Awaiting departure of Grebe Arrow (G2Ocean - Qube) & 1 other LOLO that was alongside.
14	1930/10	LINX	ERIDANUS LEADER	57	DAY	1	48HRS	A & C	YES	YES	NIL	Awaiting departure of Turandot (Armacup - QUBE).
15	1600/12	QP	CAPITAINE KUPE	18	MIDNIGHT	2	NIL	B	YES	YES	NIL	
16	0800/13	QP	YANGTZE FLOURISH	2208	EVE	3	96HRS	NS, F & H	YES	YES	NIL	Awaiting departure of Atlas Wind (Wave - QUBE).
17	1700/14	LINX	HOEGH TROTTER	34	MIDNIGHT	1	NIL	A, C, D & M	YES	YES	NIL	
18	2100/14	TML	BBC OCEAN	205S	DAY	2	NIL	B	YES	YES	NIL	
19	0130/15	QP	ANDROMEDA SPIRIT	153	EVE	1	32HRS	A, C & D	YES	YES	NIL	Awaiting departure of Hoegh Trotter (Hoegh - Linx) & yard space.
20	1400/15	QP	PRIMROSE ACE	141	EVE	1	40HRS	A & M	YES	YES	NIL	Awaiting departure of Andromeda Spirit (MOL - QUBE) & yard space.
21	2200/15	LINX	DOVER HIGHWAY	96	EVE	1	56HRS	A, C, D & M	YES	YES	NIL	Awaiting departure of Primrose Ace (MOL - QUBE) & yard space.
22	0800/16	LINX	TRANS FUTURE 5	145	EVE	1	96HRS	A & C	YES	YES	NIL	Awaiting departure of Dover Hwy (K-Line - QUBE) & yard space.
23	1900/16	LINX	GENTLE LEADER	99	EVE	1	104HRS	A & D	YES	YES	NIL	Awaiting departure of TF5 (TFS - Linx) & yard space.
24	1900/17	QP	SOFRANA TOURVILLE	261N	EVE	2	104HRS	B	YES	YES	NIL	Awaiting departure of Kokopo Chief (Swire - TML) & 1 other container vessel.
25	1000/18	QP	AEOLOS	220675	EVE	3	40HRS	UHOOK	YES	YES	NIL	Awaiting departure of Yangtze Flourish (Pioneer Shipping - Qube).
26	1530/18	QP	MORNING LYNN	EF228	EVE	1	88HRS	A & C	YES	YES	NIL	Awaiting departure of Gentle Leader (NYK - Linx) & 2 other PCCs ahead in queue.
27	1600/18	QP	JASPER ARROW	123	EVE	1	112HRS	A, C & D	YES	YES	NIL	Awaiting departure of Morning Lynn (WWO - Qube) & 3 other PCCs ahead in queue.
28	0100/19	TML	MELANESIAN CHIEF	2301S/2303N	EVE	2	NIL	B	YES	YES	NIL	
29	2200/19	QP	MORNING CHERRY	2280	EVE	1	104HRS	A & C	YES	YES	NIL	Awaiting departure of Jasper Arrow (K-Line - Qube) & 3 other PCCs ahead in queue.
30	0330/20	QP	WISTERIA ACE	119	EVE	1	120HRS	A, C & D	YES	YES	NIL	Awaiting departure of Morning Cherry (Armacup - Qube) & 4 other PCCs ahead in queue.
31	0430/20	TML	KOKOPO CHIEF	2219S/2302N	MIDNIGHT	2	NIL	B	YES	YES	NIL	
32	1900/20	QP	TS HONOUR	2201	DAY	3	72HRS	NS, F	YES	YES	NIL	Awaiting departure of Aeolos (BWS - Linx).
33	2300/22	LINX	GREEN LAKE	78	EVE	1	72HRS	A, C & M	YES	YES	NIL	Awaiting departure of Wisteria Ace (MOL - Qube) & 2 other PCCs ahead in queue.
34	0100/24	QP	DRACO FAITH	2217	MIDNIGHT	2	8HRS	B	YES	YES	NIL	Awaiting departure of Sofrana Tourville (Sofrana - Qube).
35	0900/24	QP	PEGASUS ACE	310	EVE	1	72HRS	M	YES	YES	NIL	Awaiting departure of Green Lake (NYK - Linx) & 2 other PCCs ahead in queue.
36	0330/25	QP	POLARIS HIGHWAY	69	DAY	1	72HRS	A, C, D & M	YES	YES	NIL	Awaiting departure of Pegasus Ace (MOL - Qube) & 2 other PCCs ahead in queue.

JANUARY

37	0630/25	QP	EASTERN HIGHWAY	142	DAY	1	88HRS	A, C, L & M	YES	YES	NIL	Awaiting departure of Polaris Hwy (K-Line - Qube) & 3 other PCCs ahead in queue.
38	1140/25	QP	BBC MANILA	1339004	MIDNIGHT	3	24HRS	UHOOK	YES	YES	NIL	Awaiting departure of TS Honour (Swire - TML).
39	1800/25	QP	LIBERTY	NZ207	DAY	1	104HRS	A & C	YES	YES	NIL	Awaiting departure of Eastern Hwy (K-Line - Qube) & 3 other PCCs ahead in queue.
40	2030/25	QP	LANGEOOG	H010	EVE	2	8HRS	B	YES	YES	NIL	Awaiting departure of Draco Faith (Orica - Qube).
41	0200/27	QP	AAL SINGAPORE	22010	DAY	3	24HRS	NS, J	YES	YES	NIL	Awaiting departure of BBC Manila (BBC - Qube).
42	0600/27	LINX	BBC MARMARA	04	EVE	2	NIL	B	YES	YES	NIL	
43	1445/27	LINX	O.T. IDEAAL	18	DAY	2	32HRS	B	YES	YES	NIL	Awaiting departure of BBC Marmara (DSV - Linx)
44	29-Jan	LINX	MDT1801 (SEA FORCE)	JAN	DAY	3	NIL	B	YES	YES	NIL	

Legend - Berth # and Laydown

	Primary
	Secondary
	Tertiary

SUMMARY	LINX	QUBE	TML	COMMENT
TOTAL VESSELS FOR MONTH	<u>11</u>	<u>27</u>	<u>6</u>	
GREEN BERTH (Primary)	10	27	6	
ORANGE BERTH (Secondary)	1	0	0	
RED BERTH (Tertiary)	0	0	0	
GREEN LAYDOWN (Primary)	6	18	6	
ORANGE LAYDOWN (Secondary)	4	8	0	
RED LAYDOWN (Tertiary)	1	1	0	
NUMBER OF BERTHING DELAYS	7	25	2	
NUMBER OF MACHINERY ISSUES/REQUESTS NOT MET	0	0	0	

FEBRUARY

NUMBER	DATE	STEVE-DORE	VESSEL	VOYAGE	STARTING SHIFT	BERTH #	BERTH DELAY	LAYDOWN	MACHINERY REQUEST RECEIVED	MACHINERY REQUEST FILLED	MACHINERY ISSUES	NOTES
1	2142/26 Jan	LINX	THEMIS LEADER	35	EVE	1	104HRS	A, C & D	YES	YES	NIL	Awaiting departure of Liberty (Armacup - Qube) & 3 other PCCs ahead in queue.
2	0850/27 Jan	LINX	HOEGH TOKYO	105	EVE	1	120HRS	C, D & M	YES	YES	NIL	Awaiting departure of Themis Leader (NYK - Linx) & 4 other PCCs ahead in queue.
3	0948/28 Jan	QP	PAGANELLA	2301	EVE	1	144HRS	A & C	YES	YES	NIL	Awaiting departure of Hoegh Tokyo (Hoegh - Linx) & 3 other PCCs ahead in queue.
4	1600/28 Jan	LINX	GRANDE MIRAFIORI	0123	EVE	1	136HRS	A, C, D & M	YES	YES	NIL	Awaiting departure of Paganella (Armacup - Qube) & 4 other PCCs ahead in queue.
5	1300/29 Jan	QP	PAGLIA	2351	EVE	1	184HRS	A, C, D & M	YES	YES	NIL	Awaiting departure of Grande Mirafiori (Grimaldi - Linx) & 4 other PCCs ahead in queue.
6	1558/29 Jan	LINX	HOEGH COPENHAGEN	79	MIDNIGHT	1	216HRS	A, C & D	YES	YES	NIL	Awaiting departure of Paglia (Armacup - Qube) & 5 other PCCs ahead in queue.
7	0411/30 Jan	QP	FIGARO	EF229	DAY	1	280HRS	A & M	YES	YES	NIL	Awaiting departure of Venus Spirit (MOL - Qube) & Sofrana Surville (Sofrana - Qube) & 5 other PCCs ahead in queue.
8	1430/30 Jan	LINX	TRANS FUTURE 3	278	DAY	1	224HRS	A, C & D	YES	YES	NIL	Awaiting departure of Hoegh Copenhagen (Hoegh - Linx) & 5 other PCCs ahead in queue.
9	0700/31 Jan	QP	BBC OLYMPUS	1003077	DAY	3	NIL	NS, H	YES	YES	NIL	
10	2300/31 Jan	QP	CHIPOL DONGHAI	43	MIDNIGHT	3	40HRS	UNDERHOOK	YES	YES	NIL	Awaiting departure of BBC Olympus (BBC - Qube).
11	0400/1	QP	VENUS SPIRIT	65	EVE	1	216HRS	A, C & D	YES	YES	NIL	Awaiting departure of Trans Future 3 (TFS - Linx) & 4 other PCCs ahead in queue.
12	0500/1	TML	CORAL CHIEF	2202S/2303N	DAY	2	NIL	B	YES	YES	NIL	
13	0530/1	TML	BBC AUSTRALIA	106S	DAY	2	16HRS	B	YES	YES	NIL	Awaiting departure of Coral Chief (Swire - TML).
14	2000/1	QP	TAMERLANE	EF227	DAY	3	144HRS	L & M	YES	YES	NIL	Awaiting departure of Chipol Donghai (BWS - QUBE).
15	2200/1	TML	ARKADIA	2302S/2304N	MIDNIGHT	2	40HRS	B	YES	YES	NIL	Awaiting departure of BBC Australia (BWS - TML).
16	0800/2	QP	AAL NANJING	23002	DAY	2	64HRS	OS	YES	YES	NIL	Awaiting departure of Arkadia (Swire - TML).
17	1100/3	TML	PORT VILA CHIEF	2302S/2302N	DAY	2	64HRS	B	YES	YES	NIL	Awaiting departure of AAL Nanjing (AAL - Qube).
18	1400/5	QP	BRASILIA HIGHWAY	143	EVE	1	184HRS	A, C, D & M	YES	YES	NIL	Awaiting departure of Figaro (WWO - QUBE) & 4 other PCCs ahead in queue.
19	2100/7	QP	VIKING PASSAMA	2352	EVE	1	128HRS	C, D & M	YES	YES	NIL	Awaiting departure of Brasilia Hwy (K-Line - QUBE) & 3 other PCCs ahead in queue.
20	0100/8	QP	CHINA SPIRIT	2216	DAY	3	24HRS	H & J	YES	YES	NIL	Awaiting departure of Tamerlane (WWO - Qube).
21	1600/8	LINX	GRACEFUL LEADER	113	EVE	1	184HRS	A & C	YES	YES	NIL	Awaiting departure of Viking Passama (Armacup - QUBE) & 4 other PCCs ahead in queue.
22	1800/8	QP	SOFRANA SURVILLE	284N	DAY	2	8HRS	B	YES	YES	NIL	Awaiting departure of Tamerlane (WWO - Qube).
23	1430/11	QP	DIVINE ACE	82	EVE	1	160HRS	A & C	YES	YES	NIL	Awaiting departure of Graceful Leader (NYK - Linx) & 2 other PCCs ahead in queue.
24	1900/11	QP	GENIUS HIGHWAY	65	EVE	1	152HRS	A & C	YES	YES	NIL	Awaiting departure of Divine Ace (MOL - Qube) & 3 other PCCs ahead in queue.
25	1200/12	QP	AAL HONG KONG	23002	MIDNIGHT	2	NIL	OS, F	YES	YES	NIL	
26	1430/13	LINX	HOEGH TRADER	165	DAY	1	128HRS	A, D & M	YES	YES	NIL	Awaiting departure of Genius Hwy (K-Line - QUBE) & 3 other PCCs ahead in queue.
27	1640/13	LINX	TRANS FUTURE 7	142	DAY	1	176HRS	A & C	YES	YES	NIL	Awaiting departure of Hoegh Trader (Hoegh - Linx) & 4 other PCCs ahead in queue.
28	2300/13	QP	LEO SPIRIT	59	EVE	1	200HRS	A, C & D	YES	YES	NIL	Awaiting departure of Trans Future 7 (TFS - Linx) & 5 other PCCs ahead in queue.
29	1200/14	LINX	CL LINDY	2300075	MIDNIGHT	3	NIL	UNDERHOOK	YES	YES	NIL	
30	1200/14	LINX	METIS LEADER	110	MIDNIGHT	3	192HRS	E & L	YES	YES	NIL	Following departure of Chipol Huanghe (BWS - Qube)
31	0115/15	QP	ELEGANT ACE	76	EVE	1	200HRS	C & D	YES	YES	NIL	Awaiting departure of Leo Spirit (MOL - Qube) & 6 other PCCs ahead in queue.
32	0740/15	QP	CHIPOL HUANGHE	054	EVE	3	72HRS	UNDERHOOK	YES	YES	NIL	Awaiting departure of CL Lindy (BWS - Linx).

FEBRUARY

33	1800/15	QP	KOKOPO CHIEF	2302S/2304N	MIDNIGHT	2	NIL	B	YES	YES	NIL	
34	1800/15	TML	MELANESIAN CHIEF	2303S/2305N	DAY	2	32HRS	B	YES	YES	NIL	Awaiting departure of Kokopo Chief (Swire - TML).
35	2350/15	TML	BBC PACIFIC	305S/305N	EVE	2	32HRS	B	YES	YES	NIL	Awaiting departure of Melanesian Chief (Swire - TML).
36	0800/17	QP	KITE ARROW	2301	MIDNIGHT	3	152HRS	NS	YES	YES	NIL	Awaiting departure of Metis Leader (NYK - Linx).
37	0500/18	QP	GRAND NEPTUNE	64	DAY	1	136HRS	A, C & D	YES	YES	NIL	Awaiting departure of Elegant Ace (MOL - Qube) & 3 other PCCs ahead in queue.
38	0830/18	QP	DOVER HIGHWAY	97	DAY	1	184HRS	A, C, D & M	YES	YES	NIL	Awaiting departure of Grand Neptune (MOL - Qube) & 4 other PCCs ahead in queue.
39	0700/19	QP	MORNING POST	EE229	EVE	1	216HRS	A, C & D	YES	YES	NIL	Awaiting departure of Dover Hwy (K-Line - Qube) & 4 other PCCs ahead in queue.
40	0800/20	LINX	O.T. IDEAAL	19	EVE	2	NIL	B	YES	YES	NIL	
41	2300/20	QP	ARC COMMITMENT	EF231	EVE	3	152HRS	E	YES	YES	NIL	Awaiting departure of SE Marina (Swire - TML).
42	0900/22	TML	TONGA CHIEF	2303S/2303N	MIDNIGHT	2	32HRS	B	YES	YES	NIL	Awaiting departure of Metis Leader (NYK - Linx).
43	2300/22	TML	SE MARINA	2301		3	64HRS	OS	YES	YES	NIL	Awaiting departure of Kite Arrow (G2Ocean - Qube).
44	0300/23	QP	GRAND VISION	215		3	128HRS	E & L	YES	YES	NIL	Awaiting departure of Arc Commitment (WWO - Qube).

Legend - Berth # and Laydown

	Primary
	Secondary
	Tertiary

SUMMARY	LINX	QUBE	TML	COMMENT
TOTAL VESSELS FOR MONTH	11	25	8	
GREEN BERTH (Primary)	11	25	8	
ORANGE BERTH (Secondary)	0	0	0	
RED BERTH (Tertiary)	0	0	0	
GREEN LAYDOWN (Primary)	4	13	8	
ORANGE LAYDOWN (Secondary)	7	11	0	
RED LAYDOWN (Tertiary)	0	1	0	
NUMBER OF BERTHING DELAYS	9	22	7	
NUMBER OF MACHINERY ISSUES/REQUESTS NOT MET	0	0	0	

MARCH

NUMBER	DATE	STEVE-DORE	VESSEL	VOYAGE	STARTING SHIFT	BERTH #	BERTH DELAY	LAYDOWN	MACHINERY REQUEST RECEIVED	MACHINERY REQUEST FILLED	MACHINERY ISSUES	NOTES
1	0100/20 Feb	QP	PRIME ACE	125	EVE	1	224HRS	A, C & D	YES	YES	NIL	Awaiting departure of Morning Post (WWO - QUBE) & 5 other PCCs ahead in queue.
2	1600/22 Feb	QP	BRAVERY ACE	150	DAY	1	176HRS	A, C & M	YES	YES	NIL	Awaiting departure of Prime Ace (MOL - QUBE) & 4 other PCCs ahead in queue.
3	2155/22 Feb	LINX	CYGNUS LEADER	120	EVE	1	200HRS	A, C & D	YES	YES	NIL	Awaiting departure of Bravery Ace (MOL - QUBE) & 5 other PCCs ahead in queue.
4	0800/23 Feb	QP	TITANIA	EE230	DAY	1	232HRS	C & D	YES	YES	NIL	Awaiting departure of Cygnus Leader (NYK - Linx) & 6 other PCCs ahead in queue.
5	1400/24 Feb	LINX	HERCULES LEADER	93	EVE	1	232HRS	A, C, D & M	YES	YES	NIL	Awaiting departure of Titania (WWO - QUBE) & 5 other PCCs ahead in queue.
6	0600/28 Feb	QP	TITUS	EE232	DAY	3	64HRS	E	YES	YES	NIL	Awaiting departure of BBC Rushmore (BBC - QUBE).
7	1300/28 Feb	LINX	GRANDE MIRAFIORI	0123B	MIDNIGHT	1	192HRS	A, D & M	YES	YES	NIL	Awaiting departure of Hercules Leader (NYK - Linx) & 5 other PCCs ahead in queue.
8	1730/28 Feb	LINX	GRANDE HOUSTON	123	EVE	2	160HRS	F	YES	YES	NIL	Awaiting departure of Sofrana Tourville (Sofrana - QUBE).
9	2000/28 Feb	LINX	BBC MARMARA	05	DAY	2	NIL	B	YES	YES	NIL	
10	2300/28 Feb	QP	BBC RUSHMORE	1050079	DAY	3	NIL	F	YES	YES	NIL	
11	1000/1	QP	ONYX ARROW	105	DAY	1	208HRS	A, C & M	YES	YES	NIL	Awaiting departure of Grande Mirafiori (Grimaldi - Linx) & 4 other PCCs ahead in queue.
12	2359/2	TML	ARKADIA	2304S/2306N	DAY	2	NIL	B	YES	YES	NIL	
13	1300/3	LINX	DREAM ANGEL	33	DAY	1	176HRS	A & D	YES	YES	NIL	Awaiting departure of Onyx Arrow (K-Line - QUBE) & 3 other PCCs ahead in queue.
14	1800/3	QP	SOFRANA TOURVILLE	262N	DAY	2	32HRS	B	YES	YES	NIL	Awaiting departure of Arkadia (Swire - TML).
15	0700/4	QP	HEROIC ACE	138	DAY	1	184HRS	A, C, D & M	YES	YES	NIL	Awaiting departure of Dream Angel (TFS - Linx) & 4 other PCCs ahead in queue.
16	0300/5	QP	TURANDOT	2354	EVE	1	192HRS	A, C & D	YES	YES	NIL	Awaiting departure of Heroic Ace (MOL - QUBE) & 5 other PCCs ahead in queue.
17	1030/7	QP	GRAND PACE	2	EVE	1	160HRS	A, C, D & M	YES	YES	NIL	Awaiting departure of Turandot (Armacup - QUBE) & 3 other PCCs ahead in queue.
18	1300/7	QP	PLOVER ARROW	2301	DAY	3	NIL	NS & J	YES	YES	NIL	
19	2359/7	TML	CORAL CHIEF	2303S/2305N	DAY	1	NIL	B	YES	YES	NIL	
20	0200/8	QP	CARMEN	EF234	DAY	3	64HRS	E	YES	YES	NIL	Awaiting departure of Plover Arrow (G2Ocean - QUBE).
21	1130/10	QP	EUPHRATES HIGHWAY	96	EVE	1	112HRS	A, C, D & M	YES	YES	NIL	Awaiting departure of Grand Pace (MOL - QUBE) & 2 other PCCs ahead in queue.
22	1530/10	QP	CSAV RIO NEVADO	8	DAY	1	200HRS	C & FLYOVER	YES	YES	NIL	Awaiting departure of Euphrates Hwy (K-Line - QUBE) & 3 other PCCs ahead in queue.
23	0400/12	QP	ANIARA	EF232	EVE	1	224HRS	A, C & D	YES	YES	NIL	Awaiting departure of Luna Spirit (MOL - QUBE) & 4 other PCCs ahead in queue. Vessel could not berth earlier as unable to fit due to LOA.
24	0800/13	TML	BBC OCEAN	206S/206N	EVE	2	NIL	B	YES	YES	NIL	
25	1700/13	LINX	SAGA FREYA	17SZ	DAY	3	56HRS	NS	YES	YES	NIL	Awaiting departure of Parsifal (WWO - QUBE).
26	1900/13	LINX	OT IDEAAAL	20B	DAY	2	24HRS	B	YES	YES	NIL	Awaiting departure of BBC Ocean (BWS - TML).
27	0500/14	QP	PARSIFAL	NZ301	DAY	1	16HRS	E	YES	YES	NIL	Awaiting departure of BBC Ocean (BWS - TML).
28	0540/14	QP	LUNA SPIRIT	146	EVE	1	144HRS	A, C & D	YES	YES	NIL	Awaiting departure of CSAV Rio Nevado (K-Line - QUBE) & 1 other PCCs ahead in queue.
29	0700/14	QP	BRASILIA HIGHWAY	144	DAY	1	208HRS	A, C & D	YES	YES	NIL	Awaiting departure of Aniara (WWO - QUBE) & 3 other PCCs ahead in queue.
30	0500/15	LINX	MDT1801 (SEA FORCE)		DAY	2	NIL	B	YES	YES	NIL	
31	0730/15	LINX	SPRING SKY	135	DAY	1	208HRS	A & C	YES	YES	NIL	Awaiting departure of Brasilia Hwy (K-Line - QUBE) & 3 other PCCs ahead in queue.
32	2200/15	QP	IRIS ACE	73	EVE	3	200HRS	E	YES	YES	NIL	Awaiting departure of Arch Raphael (BWS - Linx).
33	2200/15	LINX	GENTLE LEADER	100	MIDNIGHT	1	208HRS	A, C, D & M	YES	YES	NIL	Awaiting departure of Spring Sky (TFS - Linx) & 4 other PCCs ahead in queue.

MARCH

34	1000/16	QP	SOFRANA SURVILLE	285N	MIDNIGHT	2	8HRS	B	YES	YES	NIL	Awaiting departure of OT Ideaal (OkTedi - Linx).
35	2140/16	QP	WESTERN HIGHWAY	152	DAY	1	176HRS	FLYOVER	YES	YES	NIL	Awaiting departure of Gentle Leader (NYK - Linx) & 5 other PCCs ahead in queue.
36	0600/18	QP	RCC TIANJIN	9	EVE	1	216HRS	A & C	YES	YES	NIL	Awaiting departure of Western Hwy (K-Line - QUBE) & 6 other PCCs ahead in queue.
37	2200/19	TML	MELANESIAN CHIEF	2305S/2307N	DAY	2	NIL	B	YES	YES	NIL	
38	0530/20	QP	NABUCCO	EF234	DAY	1	NIL	E	YES	YES	NIL	
39	0900/20	QP	GRAND DIAMOND	1	EVE	1	192HRS	A & C	YES	YES	NIL	Awaiting departure of RCC Tianjin (MOL - QUBE) & 5 other PCCs ahead in queue. Vessel could not berth earlier as unable to fit due to LOA.
40	1200/20	LINX	ARCH RAPHAEL	2320651	EVE	3	24HRS	UNDERHOOK	YES	YES	NIL	Awaiting departure of Nabucco (WWO - QUBE).
41	2130/21	QP	POAVOSA BRAVE	2301	DAY	3	72HRS	F & J	YES	YES	NIL	Awaiting departure of Iris Ace (MOL - QUBE).
42	0300/22	LINX	ASTERIA LEADER	18	EVE	1	176HRS	A, D & M	YES	YES	NIL	Awaiting departure of Grand Diamond (MOL - QUBE) & 5 other PCCs ahead in queue. Vessel could not berth earlier as unable to fit due to LOA.
43	0930/23	QP	POLARIS HIGHWAY	70	EVE	1	160HRS	D & M	YES	YES	NIL	Awaiting departure of Asteria Leader (NYK - Linx) & 4 other PCCs ahead in queue.
44	1000/23	QP	BASILISK	1340005	EVE	3	NIL	B & OS	YES	YES	NIL	Awaiting departure of Aniara (WWO - QUBE).
45	1800/23	TML	KOKOPO CHIEF	2304S/2306N	DAY	2	8HRS	B	YES	YES	NIL	Awaiting departure of Basilisk (Qube).
46	1900/23	TML	GOLD OAK	2302	EVE	3	112HRS	OS, NS & F	YES	YES	NIL	Awaiting departure of Poavosa Brave (G2Ocean-Qube)
47	2230/25	LINX	BBC MARMARA	06	DAY	2	56HRS	B	YES	YES	NIL	Awaiting departure of Kokopo Chief (Swire - TML)

Legend - Berth # and Laydown

	Primary
	Secondary
	Tertiary

SUMMARY	LINX	QUBE	TML	COMMENT
TOTAL VESSELS FOR MONTH	14	27	6	
GREEN BERTH (Primary)	14	27	6	
ORANGE BERTH (Secondary)	0	0	0	
RED BERTH (Tertiary)	0	0	0	
GREEN LAYDOWN (Primary)	8	13	6	
ORANGE LAYDOWN (Secondary)	6	14	0	
RED LAYDOWN (Tertiary)	0	0	0	
NUMBER OF BERTHING DELAYS	12	23	2	
NUMBER OF MACHINERY ISSUES/REQUESTS NOT MET	0	0	0	

APRIL

NUMBER	DATE	STEVE-DORE	VESSEL	VOYAGE	STARTING SHIFT	BERTH #	BERTH DELAY	LAYDOWN	MACHINERY REQUEST RECEIVED	MACHINERY REQUEST FILLED	MACHINERY ISSUES	NOTES
1	0400/26 Mar	QP	DON JUAN	2355	EVE	1	192HRS	A, C, D & M	YES	YES	NIL	Awaiting departure of Morning Crystal (Armacup - Qube) & 4 other PCCs ahead in queue. Morning Crystal was prioritised by Armacup ahead of Don Juan.
2	1830/26 Mar	QP	MORNING CRYSTAL	2304	EVE	1	112HRS	A, C, D & M	YES	YES	NIL	Awaiting departure of Polaris Hwy (K-Line - Qube) & 3 other PCCs ahead in queue. Morning Crystal was prioritised by Armacup ahead of Don Juan.
3	2354/26 Mar	LINX	HOEGH JACKSONVILLE	54	EVE	1	224HRS	A, C & D	YES	YES	NIL	Awaiting departure of Don Juan (Armacup - Qube) & 4 other PCCs ahead in queue.
4	0950/27 Mar	QP	CHIPOL XIONGAN	HF2323	EVE	3	32HRS	UNDERHOOK	YES	YES	NIL	Awaiting departure of Gold Oak (Swire - TML).
5	1330/27 Mar	LINX	TRANS FUTURE 3	280	EVE	2	224HRS	M	YES	YES	NIL	Awaiting departure of Hoegh Jacksonville (Hoegh - Linx).
6	2230/27 Mar	QP	AMBER ARROW	141	EVE	1	224HRS	A, C & D	YES	YES	NIL	Awaiting departure of Hoegh Jacksonville (Hoegh - Linx) & 4 other PCCs ahead in queue.
7	0930/29 Mar	TML	BBC OCEAN	207	MIDNIGHT	2	NIL	B	YES	YES	NIL	
8	1000/31 Mar	QP	PRESTIGE ACE	185	EVE	1	264HRS	A, C, D & M	YES	YES	NIL	Awaiting departure of Amber Arrow (K-Line - Qube) & awaiting yard space.
9	2300/31 Mar	LINX	CAPRICORNUS LEADER	55	EVE	1	272HRS	A & C	YES	YES	NIL	Awaiting departure of Prestige Ace (MOL - Qube) & 3 other PCCs ahead in queue.
10	0800/1	QP	AAL SINGAPORE	23002	DAY	3	72HRS	NS & J	YES	YES	NIL	Awaiting departure of Chipol Xiongan (BWS - Qube).
11	0800/1	QP	DA DE	58	EVE	2	NIL	B	YES	YES	NIL	
12	2355/1	QP	CRYSTAL ACE		DAY	1	312HRS	A, C & M	YES	YES	NIL	Awaiting departure of Morning Cherry (Armacup - Qube) & 6 other PCCs ahead in queue.
13	0400/2	LINX	OT IDEAAL	21B	MIDNIGHT	2	8HRS	B	YES	YES	NIL	Awaiting departure of Da De (Orica - Qube).
14	0700/3	QP	MORNING CHERRY	2356	DAY	1	256HRS	A, D & M	YES	YES	NIL	Awaiting departure of Swift Ace (MOL - Qube) & 4 other PCCs ahead in queue.
15	1000/3	TML	ARKADIA	2306S/2308N	DAY	2	16HRS	B	YES	YES	NIL	Awaiting departure of OT Ideaal (OkTedi - Linx).
16	0800/4	QP	GLOVIS COURAGE	1	DAY	1	352HRS	A, C, D & M	YES	YES	NIL	Awaiting departure of Morning Lucy (WWO - Qube) & 8 other PCC's ahead in queue.
17	2030/4	LINX	KOGA REVOLUTION	2301	DAY	3	24HRS	OS	YES	YES	NIL	Awaiting departure of AAL Singapore (AAL - Qube).
18	1330/5	QP	TRAVIATA	EF302	EVE	1	280HRS	A	YES	YES	NIL	Awaiting departure of Crystal Ace (MOL - Qube) & 5 other PCC's ahead in queue.
19	0900/6	QP	MORNING LUCY	EF233	EVE	1	288HRS	A, C & D	YES	YES	NIL	Awaiting departure of Traviata (WWO - Qube) & 6 other PCC's ahead in queue.
20	1830/6	QP	MANDARIN ARROW	2302	DAY	3	32HRS	NS	YES	YES	NIL	Awaiting departure of Koga Revolution (Qube).
21	0600/7	QP	SWIFT ACE	123	EVE	1	144HRS	A, C & D	YES	YES	NIL	Awaiting departure of Capricornus Leader (NYK - Linx) & 1 other PCC ahead in queue.
22	1130/7	QP	BBC RUSSIA	1192042	DAY	3	80HRS	OS & B	YES	YES	NIL	Awaiting departure of Mandarin Arrow (G2Ocean - Qube).
23	1400/7	QP	GENIUS HIGHWAY	66	DAY	1	320HRS	A & C	YES	YES	NIL	Awaiting departure of Glovis Courage (MOL - Qube) & 7 other PCC's ahead in queue.
24	1800/8	QP	AAL SHANGHAI	23002	DAY	3	120HRS	OS, NS, F & J	YES	YES	NIL	Awaiting departure of BBC Russia (BBC - Qube).
25	1800/8	LINX	PACIFIC HARMONY	2201	DAY	3	168HRS	F	YES	YES	NIL	Awaiting departure of AAL Shanghai (AAL - Qube).
26	0100/9	TML	CORAL CHIEF	2305S/2307N	MIDNIGHT	2	16HRS	B	YES	YES	NIL	Awaiting departure of Koga Revolution (Qube).
27	0130/9	QP	AQUAMARINE SW	103	DAY	3	312HRS	F, J & NS	YES	YES	NIL	Awaiting departure of Pacific Harmony (Linx).
28	1400/10	LINX	SARA LEADER	35	DAY	1	272HRS	A, C & D	YES	YES	NIL	Awaiting departure of Genius Hwy (K-Line - Qube) & 8 other PCCs ahead in queue.
29	1300/11	QP	MERCURY ACE	92	DAY	1	272HRS	A, C, D, M & FLYOVER	YES	YES	NIL	Awaiting departure of Sara Leader (NYK - Linx) & 8 other PCC ahead in queue.
30	11-Apr	LINX	MDT1801 (SEA FORCE)		DAY	2	NIL	B	YES	YES	NIL	
32	1800/14	QP	TULANE	EF303	MIDNIGHT	1	264HRS	C & D	YES	YES	NIL	Awaiting departure of Artemis Leader (NYK - Linx) & 7 other PCC ahead in queue.
33	2050/14	LINX	ARTEMIS LEADER	116	EVE	1	224HRS	A & C	YES	YES	NIL	Awaiting departure of Mercury Ace (MOL - Qube) & 6 other PCC's ahead in queue.
35	16-Apr	TML	BBC OCEAN	208	DAY	2	NIL	B	YES	YES	NIL	
37	1500/17	QP	SOFRANA TOURVILLE	263N	MIDNIGHT	2	NIL	B	YES	YES	NIL	
40	1500/18	QP	DRACO FAITH	002	MIDNIGHT	2	24HRS	B	YES	YES	NIL	Awaiting departure of Sofrana Tourville (Sofrana - Qube).

APRIL

41	1200/19	TML	MELANESIAN CHIEF	2307S/2309N	DAY	2	32HRS	B	YES	YES	NIL	Awaiting departure of Draco Faith (Orica - Qube).
43	0030/21	LINX	BBC MARMARA	07	MIDNIGHT	2	40HRS	B	YES	YES	NIL	Awaiting departure of Melanesian Chief (Swire - TML).
47	0600/23	LINX	OT IDEAAL	22B	DAY	2	16HRS	B	YES	YES	NIL	Awaiting departure of BBC Marmara (DSV - Linx).
50	1000/25	QP	SOFRANA SURVILLE	286N	DAY	2	8HRS	B	YES	YES	NIL	Awaiting departure of OT Ideaal (OkTedi - Linx).
51	1000/26	TML	HIGHLAND CHIEF	2306S/2308N	DAY	2	40HRS	B	YES	YES	NIL	Awaiting departure of Sofrana Surville (Sofrana - Qube).

Legend - Berth # and Laydown

	Primary
	Secondary
	Tertiary

SUMMARY	LINX	QUBE	TML	COMMENT
TOTAL VESSELS FOR MONTH	11	23	6	
GREEN BERTH (Primary)	11	23	6	
ORANGE BERTH (Secondary)	0	0	0	
RED BERTH (Tertiary)	0	0	0	
GREEN LAYDOWN (Primary)	8	12	6	
ORANGE LAYDOWN (Secondary)	3	11	0	
RED LAYDOWN (Tertiary)	0	0	0	
NUMBER OF BERTHING DELAYS	10	2	4	
NUMBER OF MACHINERY ISSUES/REQUESTS NOT MET	0	0	0	

MAY

NUMBER	DATE	STEVE-DORE	VESSEL	VOYAGE	STARTING SHIFT	BERTH #	BERTH DELAY	LAYDOWN	MACHINERY REQUEST RECEIVED	MACHINERY REQUEST FILLED	MACHINERY ISSUES	NOTES
1	0001/14 Apr	LINX	HERCULES LEADER	94	DAY	1	336HRS	A & C	YES	YES	NIL	Awaiting departure of Tulane (WWO - Qube) & 8 other PCC's ahead in queue.
2	0600/15 Apr	QP	BRAVERY ACE	151	DAY	1	448HRS	A & C	YES	YES	NIL	Awaiting departure of Hercules Leader (NYK - Linx) & 8 other PCC ahead in queue.
3	1400/17 Apr	LINX	HOEGH TRAVELLER	38	EVE	1	416HRS	A, C & D	YES	YES	NIL	Awaiting departure of Bravery Ace (MOL - Qube) & 8 other PCC's ahead in queue.
4	0400/18 Apr	QP	VIKING PASSAMA	2357	DAY	1	440HRS	A & C	YES	YES	NIL	Awaiting departure of Hoegh Traveller (Hoegh - Linx) & 8 other PCCs ahead in queue.
5	0630/18 Apr	QP	GREAT AGILITY	2303	DAY	2	400HRS	OS & F	YES	YES	NIL	Awaiting departure of Highland Chief (Swire - TML).
6	2100/19 Apr	QP	FRONTIER ACE	194	DAY	2	408HRS	M	YES	YES	NIL	Awaiting departure of Hoegh Traveller (Hoegh - Linx).
7	0550/21 Apr	QP	MORNING LADY	EE234	DAY	1	400HRS	A & C	YES	YES	NIL	Awaiting departure of Viking Passama (Armacup - Qube) & 7 other PCCs ahead in queue.
8	0600/21 Apr	QP	IVORY ARROW	149	EVE	1	432HRS	A & C	YES	YES	NIL	Awaiting departure of Morning Lady (WWO - Qube) & 8 other PCC's ahead in queue.
9	0430/22 Apr	LINX	JENS OLDENDORFF		EVE	3	288HRS	UNDERHOOK	YES	YES	NIL	Awaiting departure of Themis Triumph (Qube).
10	1200/23 Apr	QP	DON CARLOS	EE301	EVE	1	400HRS	A, C & D	YES	YES	NIL	Awaiting departure of Ivory Arrow (K-Line - Qube) & 6 other PCCs ahead in queue.
11	1000/24 Apr	QP	PAGANELLA	2358	DAY	1	392HRS	A & C	YES	YES	NIL	Awaiting departure of Don Carlos (WWO - Qube) & 7 other PCC's ahead in queue.
12	1030/26 Apr	LINX	APHRODITE LEADER	36	DAY	1	368HRS	A, C & D	YES	YES	NIL	Awaiting departure of Paganella (Armacup - Qube) & 7 other PCCs ahead in queue.
13	2330/26 Apr	QP	ELEGANT ACE	77	DAY	1	384HRS	A, D & M	YES	YES	NIL	Awaiting departure of Aphrodite Leader (NYK - Linx) & 8 other PCC ahead in queue.
14	0030/27 Apr	LINX	ERIDANUS LEADER	59	DAY	1	408HRS	A, C & M	YES	YES	NIL	Awaiting departure of Elegant Ace (MOL - Qube) & 9 other PCC's ahead in queue.
15	1130/27 Apr	QP	PALMELA	194	EVE	1	424HRS	A, C, D & M	YES	YES	NIL	Awaiting departure of Eridanus Leader (NYK - Linx) & 9 other PCC ahead in queue.
16	1500/27 Apr	QP	EUPHRATES HIGHWAY	97	EVE	1	472HRS	A & C	YES	YES	NIL	Awaiting departure of Palmela (MOL - Qube) & 10 other PCC's ahead in queue.
17	1500/28 Apr	QP	TARIFA	EE302	EVE	1	472HRS	A, C & D	YES	YES	NIL	Awaiting departure of Euphrates Hwy (K-Line - Qube) & 11 other PCCs ahead in queue.
18	1800/28 Apr	LINX	HOEGH CHIBA	68	MIDNIGHT	1	496HRS	A, C, D & M	YES	YES	NIL	Awaiting departure of Tarifa (WWO - Qube) & 12 other PCC's ahead in queue.
19	1900/28 Apr	QP	DREAM BEAUTY	13	DAY	3	392HRS	E	YES	YES	NIL	Awaiting departure of Penguin Arrow (G2Ocean - QUBE).
20	0500/29 Apr	TML	APEX VOYAGER	2303S	DAY	3	184HRS	OS & NS	YES	YES	NIL	Awaiting departure of Jens Oldendorff (BWS - Linx).
21	0700/29 Apr	QP	THEMIS TRIUMPH	78	DAY	3	16HRS	UNDERHOOK	YES	YES	NIL	Awaiting departure of Aquamarine SW (Qube).
22	1630/29 Apr	QP	MORNING CRYSTAL	2359	EVE	3	544HRS	E	YES	YES	NIL	Awaiting departure of Oberon (WWO - Qube).
23	0730/3	TML	ARKADIA	2308S/2310N	EVE	2	NIL	B	YES	YES	NIL	
24	0600/4	TML	BBC OCEAN	209	DAY	2	16HRS	B	YES	YES	NIL	
25	0700/5	QP	SIRIUS HIGHWAY	50	DAY	1	472HRS	A, C, D & M	YES	YES	NIL	Awaiting departure of Tonsberg (WWO - Qube) & 12 other PCC's ahead in queue & awaiting yard space.
26	0400/6	QP	BRASILIA HIGHWAY	145	EVE	1	480HRS	A, D & M	YES	YES	NIL	Awaiting departure of Sirius Hwy (K-Line - Qube) & 13 other PCCs ahead in queue.
27	2100/6	LINX	TRANS FUTURE 6	143	MIDNIGHT	1	544HRS	A & C	YES	YES	NIL	Awaiting departure of Brasilia Hwy (K-Line - Qube) & 13 other PCCs ahead in queue.
28	1400/7	QP	TANNHAUSER	EF301	DAY	3	192HRS	E	YES	YES	NIL	Awaiting departure of Dream Beauty (K-Line - Qube).
29	2359/9	QP	OBERON	EF305	DAY	3	264HRS	E	YES	YES	NIL	Awaiting departure of AAL Brisbane (AAL - Qube).
30	1800/10	QP	BBC DESTINY	1287031	DAY	2	NIL	UNDERHOOK	YES	YES	NIL	
31	1100/11	QP	PENGUIN ARROW	2302	MIDNIGHT	3	NIL	OS, NS & J	YES	YES	NIL	
32	1200/11	TML	CORAL CHIEF	2307S/2309N	EVE	2	NIL	B	YES	YES	NIL	
33	1000/12	QP	AAL BRISBANE	23002	MIDNIGHT	3	120HRS	NS, J, H & B	YES	YES	NIL	Awaiting departure of Tannhauser (WWO - Qube).

MAY

34	0100/15	LINX	OT IDEAAL	22B	DAY	2	NIL	B	YES	YES	NIL	
35	1600/17	TML	MELANESIAN CHIEF	2309S/2311N	MIDNIGHT	2	NIL	B	YES	YES	NIL	
36	0500/19	QP	SOFRANA TOURVILLE	264N	DAY	2	NIL	B	YES	YES	NIL	
37	1000/21	TML	BBC OCEAN	210	EVE	2	96HRS	B	YES	YES	NIL	Awaiting departure of Highland Chief (Swire - TML).
38	1000/22	QP	TONSBERG	EF304	EVE	1	24HRS	A	YES	YES	NIL	Awaiting yard space.
39	0630/23	LINX	BBC MARMARA	8	DAY	3	NIL	H	YES	YES	NIL	Awaiting receival cut-off.
40	1000/24	TML	HIGHLAND CHIEF	2308S/2310N	EVE	2	NIL	B	YES	YES	NIL	
41	0500/25	LINX	JACOB OLDENDORFF	2321833	EVE	3	48HRS	UNDERHOOK	YES	YES	NIL	Awaiting departure of BBC Marmara (DSV - Linx).
42	1930/29	QP	PIA	1306016	MIDNIGHT	2	NIL	OS	YES	YES	NIL	

Legend - Berth # and Laydown

	Primary
	Secondary
	Tertiary

SUMMARY	LINX	QUBE	TML	COMMENT
TOTAL VESSELS FOR MONTH	10	25	7	
GREEN BERTH (Primary)	9	25	7	
ORANGE BERTH (Secondary)	1	0	0	
RED BERTH (Tertiary)	0	0	0	
GREEN LAYDOWN (Primary)	6	18	7	
ORANGE LAYDOWN (Secondary)	4	7	0	
RED LAYDOWN (Tertiary)	0	0	0	
NUMBER OF BERTHING DELAYS	8	21	3	
NUMBER OF MACHINERY ISSUES/REQUESTS NOT MET	0	0	0	

JUNE

NUMBER	DATE	STEVE-DORE	VESSEL	VOYAGE	STARTING SHIFT	BERTH #	BERTH DELAY	LAYDOWN	MACHINERY REQUEST RECEIVED	MACHINERY REQUEST FILLED	MACHINERY ISSUES	NOTES
1	2100/13 May	QP	MEDITERRANEAN SEA	5S	MIDNIGHT	1	400HRS	A, C & D	YES	YES	NIL	Awaiting departure of Trans Future 6 (TFS - Linx) & 7 other PCCs ahead in queue.
2	0050/15 May	QP	TURANDOT	2360	EVE	1	392HRS	A, C & M	YES	YES	NIL	Awaiting departure of Mediterranean Sea (Zim - Qube) & 7 other PCCs ahead in queue.
3	0600/15 May	LINX	POLARIS LEADER	79	DAY	1	424HRS	A & C	YES	YES	NIL	Awaiting departure of Turandot (Armacup - Qube) & 8 other PCCs ahead in queue.
4	0830/17 May	QP	TYSLA	EF307	EVE	3	384HRS	F	YES	YES	NIL	Awaiting departure of Chipol Taian (BWS - Qube).
5	1600/24 May	QP	CHIPOL TAIAN	HF2301	MIDNIGHT	3	112HRS	UNDERHOOK	YES	YES	NIL	Awaiting departure of Jacob Oldendorff (BWS - Linx).
6	1900/25 May	QP	ISTRA ACE	149	DAY	1	192HRS	A, C, D, L & M	YES	YES	NIL	Awaiting departure of Polaris Leader (NYK - Linx) & 4 other PCC ahead in queue.
7	0125/27 May	LINX	HOEGH BERLIN	120	DAY	1	216HRS	A, C & M	YES	YES	NIL	Awaiting departure of Istra Ace (MOL - Qube) & 4 other PCC's ahead in queue.
8	0630/27 May	QP	GLOVIS CARDINAL	2	DAY	1	280HRS	A, C, D & M	YES	YES	NIL	Awaiting departure of Hoegh Berlin (Hoegh - Linx) & 5 other PCCs ahead in queue.
9	2230/27 May	LINX	GRANDE FLORIDA	0223	DAY	1	336HRS	A, C & D	YES	YES	NIL	Awaiting departure of Glovis Cardinal (MOL - Qube) & 6 other PCC's ahead in queue.
10	2300/1	LINX	OT IDEAAL	23	DAY	2	NIL	B	YES	YES	NIL	Berthed upon receipt cut-off.
11	2300/1	LINX	VIRGO LEADER	51	EVE	1	296HRS	A, C & M	YES	YES	NIL	Awaiting departure of Grande Florida (Grimaldi - Linx) & 4 other PCCs ahead in queue.
12	2330/2	LINX	TRANS FUTURE 5	147	EVE	1	296HRS	A, C, D & M	YES	YES	NIL	Awaiting departure of Virgo Leader (NYK - Linx) & 3 other PCC ahead in queue.
13	1430/3	QP	VIKING PAGLIA	2361	MIDNIGHT	1	312HRS	A, C & M	YES	YES	NIL	Awaiting departure of Trans Future 5 (TFS - Linx) & 4 other PCCs ahead in queue.
14	0030/4	QP	SOFRANA SURVILLE	287N	DAY	2	NIL	B	YES	YES	NIL	
15	6-Jun	LINX	SEA FORCE / MDT1801	09	DAY	2	NIL	B	YES	YES	NIL	
16	1200/6	QP	KITE ARROW	2302	MIDNIGHT	3	NIL	NS	YES	YES	NIL	
17	1400/7	TML	CORAL CHIEF	2309S/2311N	EVE	2	NIL	B	YES	YES	NIL	
18	1000/8	TML	MELANESIAN CHIEF	2399N	DAY	2	NIL	B	YES	YES	NIL	Vessel arrived off-schedule due to mechanical issues on previous voyage.
19	1800/9	QP	TIRRANNA	EF308	MIDNIGHT	1	216HRS	A & C	YES	YES	NIL	Awaiting departure of Viking Paglia (Armacup - Qube) & 3 other PCCs ahead in queue.
20	2359/9	QP	MORNING CHERRY	2362	DAY	1	256HRS	A, C & D	YES	YES	NIL	Awaiting departure of Tirranna (WWO - Qube) & 4 other PCC's ahead in queue.
21	1330/11	LINX	SAGA DISCOVERY	58SZ	MIDNIGHT	3	NIL	OS, NS	YES	YES	NIL	
22	1200/14	TML	BBC AUSTRALIA	110	MIDNIGHT	2	NIL	B	YES	YES	NIL	
23	1300/15	TML	ARKADIA	2313N	MIDNIGHT	2	NIL	B	YES	YES	NIL	
24	1600/15	QP	CHIPOL XIONGAN	HF2325	MIDNIGHT	3	NIL	UNDERHOOK	YES	YES	NIL	
25	1100/16	QP	AAL SHANGHAI	23004	DAY	3	56HRS	NS & J	YES	YES	NIL	Awaiting departure of Chipol Xiongan (BWS - Qube).
26	0400/18	QP	GRAND EAGLE	025	MIDNIGHT	1	80HRS	A & C	YES	YES	NIL	Awaiting departure of Morning Cherry (Armacup - Qube) & 1 other PCC ahead in queue.
27	2359/18	QP	TASMAN SPIRIT	2301	DAY	3	64HRS	NS & F	YES	YES	NIL	Awaiting departure of AAL Shanghai (AAL - Qube).
28	2359/19	LINX	BBC MARMARA	9	DAY	2	NIL	B	YES	YES	NIL	
29	1000/21	LINX	OT IDEAAL	24	MIDNIGHT	2	NIL	B	YES	YES	NIL	
30	0600/22	LINX	ARCH. RAPHAEL	2322229	EVE	3	72HRS	UNDERHOOK	YES	YES	NIL	Awaiting departure of Tasman Spirit (Pioneer - Qube).
31	1700/22	QP	DOVER HIGHWAY	100	DAY	1	NIL	A, C, D & M	YES	YES	NIL	Awaiting departure of Grand Venus (K-Line - Qube). K-Line elected to prioritise Grand Venus over Dover Hwy. Due to Dover Hwy having to wait in MEL and Grand Venus heading back O/S.
32	2300/22	QP	GRAND VENUS	17	EVE	1	NIL	B	YES	YES	NIL	
33	0300/23	TML	HIGHLAND CHIEF	2310S/2312N	DAY	2	NIL	B	YES	YES	NIL	
34	1100/24	QP	THERMOPYLAE	EF309	EVE	1	88HRS	A, C, D & M	YES	YES	NIL	Awaiting departure of Tasman Spirit (Pioneer - Qube).

JUNE

35	2000/24	QP	SOFRANA TOURVILLE	265N	DAY	2	NIL	B	YES	YES	NIL	Awaiting departure of Highland Chief (Swire - TML).
36	1700/26	QP	GRAND PACE	3	EVE	1	64HRS	A & C	YES	YES	NIL	Awaiting departure of Thermopylae (WWO - Qube).
37	1000/28	TML	MELANESIAN CHIEF	2399S/2314N	EVE	2	NIL	B	YES	YES	NIL	
38	1800/28	QP	BBC NYHAVN	1206043	DAY	3	24HRS	UNDERHOOK	YES	YES	NIL	
39	29-Jun	LINX	TRANS FUTURE 3	281	DAY	3	NIL	A, C, D & M	YES	YES	NIL	Awaiting yard space.

Legend - Berth # and Laydown

	Primary
	Secondary
	Tertiary

SUMMARY	LINX	QUBE	TML	COMMENT
TOTAL VESSELS FOR MONTH	<u>12</u>	<u>21</u>	<u>6</u>	
GREEN BERTH (Primary)	12	21	6	
ORANGE BERTH (Secondary)	0	0	0	
RED BERTH (Tertiary)	0	0	0	
GREEN LAYDOWN (Primary)	7	13	6	
ORANGE LAYDOWN (Secondary)	5	7	0	
RED LAYDOWN (Tertiary)	0	1	0	
NUMBER OF BERTHING DELAYS	6	15	0	
NUMBER OF MACHINERY ISSUES/REQUESTS NOT MET	0	0	0	

Attachment A

KPI 6

Allocation of first point of rest

Port Kembla

Jan 1 – Jun 30, 2023

NUMBER	DATE	STEVE-DORE	VESSEL	VOYAGE	STARTING SHIFT	BERTH #	BERTH DELAY	LAYDOWN	MACHINERY REQUEST RECEIVED	MACHINERY REQUEST FILLED	MACHINERY ISSUES	NOTES
1	1/01/2023	QUBE	EMERALD ACE	082	DAY	105	N	A BLOCK,B BLOCK,C BLOCK,D BLOCK,F BLOCK, H BLOCK, R BLOCK, PSHEDED AND N BLOCK	Y	Y		VESSEL BERTHED AT 105 DUE TO 106 AND 107 BEING OCCUPIED. A AND C BLOCK UTILISED AS NOT ENOUGH SPACE IN H AND F BLOCKS
2	1/01/2023	LINX	HOEGH TRAPPER	37	DAY	106	N	A BLOCK,D BLOCK,I BLOCK,L BLOCK, PSHEDED AND N BLOCK	Y	Y		A BLOCK UTILISED AS NOT ENOUGH SPACE IN H AND F BLOCKS
3	1/01/2023	LINX	ARTEMIS LEADER	114	DAY	107	N	GBLK,A BLOCK,C BLOCK,D BLOCK AND O BLOCK	Y	Y		D BLOCK UTILISED AS NOT ENOUGH SPACE IN A AND C BLOCKS
4	2/01/2023	LINX	EQUULEUS LEADER	035	EVE	106	N	A BLOCK,B BLOCK,C BLOCK,D BLOCK,O BLOCK,F BLOCK,R BLOCK, L BLOCK,M BLOCK AND N BLOCK	Y	Y		A, C AND O BLOCKS UTILISED AS NOT ENOUGH SPACE IN H AND F BLOCKS
5	5/01/2023	QUBE	ONYX ARROW	105	EVE	105	N	D BLOCK,F BLOCK,H BLOCK, R BLOCK,P SHED AND N BLOCK	Y	Y		VESSEL BERTHED AT 105 DUE TO 106 AND 107 BEING OCCUPIED.
6	5/01/2023	QUBE	THALATTA	EF225	EVE	106	N	A BLOCK,C BLOCK,Q BLOCK, K BLOCK, PSHEDED AND N BLOCK	Y	Y		A, C AND Q BLOCKS UTILISED AS NOT ENOUGH SPACE IN H AND F BLOCKS
7	7/01/2023	QUBE	LIBERTY ACE	142	DAY	105	N	B BLOCK AND N BLOCK	Y	Y		VESSEL BERTHED AT 105 DUE TO 106 AND 107 BEING OCCUPIED. B BLOCK UTILISED AS NOT ENOUGH SPACE IN H AND F BLOCKS
8	7/01/2023	QUBE	BRASILIA HIGHWAY	142	EVE	107	N	107CON,A BLOCK,B BLOCK,C BLOCK,Q BLOCK,D BLOCK, O BLOCK, F BLOCK AND H BLOCK	Y	Y		B, D, F AND H BLOCKS UTILISED AS NOT ENOUGH SPACE IN A AND C BLOCKS
9	8/01/2023	QUBE	COE LUISA	2210	DAY	106	N	P SHED AND M BLOCK	Y	Y		
10	10/01/2023	QUBE	PAN NOVA	017	NIGHT	103	N	DIRECT TO HOOK	Y	Y		
11	10/01/2023	LINX	HERCULES LEADER	092	EVE	105	N	D BLOCK,F BLOCK AND H BLOCK	Y	Y		VESSEL BERTHED AT 105 DUE TO 106 AND 107 BEING OCCUPIED.
12	11/01/2023	LINX	HOEGH TROTTER	034	EVE	107	N	C BLOCK,O BLOCK,E SHED, 107CON AND EBLK1	Y	Y		
13	11/01/2023	QUBE	CHARADE	046	EVE	103	N	DIRECT TO HOOK	Y	Y		
14	12/01/2023	QUBE	ANDROMEDA SPIRIT	153	DAY	105	N	B BLOCK,D BLOCK,F BLOCK,H BLOCK, R BLOCK, PSHEDED AND N BLOCK	Y	Y		VESSEL BERTHED AT 105 DUE TO 106 AND 107 BEING OCCUPIED.
15	13/01/2023	QUBE	DREAM JASMINE	024	EVE	107	N	C BLOCK, Q BLOCK AND O BLOCK	Y	Y		
16	14/01/2023	QUBE	DON JUAN	2278	NIGHT	105	N	A BLOCK,B BLOCK,D BLOCK,F BLOCK,H BLOCK, PSHEDED AND N BLOCK	Y	Y		VESSEL BERTHED AT 105 DUE TO 106 AND 107 BEING OCCUPIED. A BLOCK UTILISED AS NOT ENOUGH SPACE IN H AND F BLOCKS
17	14/01/2023	LINX	CAPRICORNUS LEADER	054	DAY	107	N	A BLOCK, C BLOCK,QBLOCK, O BLOCK, ESHED, 107CON AND GBLK	Y	Y		
18	14/01/2023	LINX	SAGA EXPLORER	565Z	EVE	106	N	GSHED	Y	Y		
19	15/01/2023	QUBE	MORNING CRYSTAL	2279	EVE	105	N	F AND H BLOCK	Y	Y		VESSEL BERTHED AT 105 DUE TO 106 AND 107 BEING OCCUPIED.
20	17/01/2023	QUBE	WISTERIA ACE	119	DAY	107	N	107CON,CBLOCK,B BLOCK, Q BLOCK, D BLOCK, O BLOCK AND I BLOCK	Y	Y		B AND D BLOCKS UTILISED AS NOT ENOUGH SPACE IN A AND C BLOCKS
21	17/01/2023	QUBE	TAI XING	2203	EVE	106	N	L BLOCK	Y	Y		
22	17/01/2023	QUBE	NEW CENTURY 2	176	EVE	105	N	C BLOCK,B BLOCK,D BLOCK,F BLOCK AND M BLOCK	Y	Y		VESSEL BERTHED AT 105 DUE TO 106 AND 107 BEING OCCUPIED. C BLOCK UTILISED AS NOT ENOUGH SPACE IN H AND F BLOCKS
23	19/01/2023	QUBE	TURANDOT	2281	EVE	107	N	EBLK, 107CON, 107STR,A BLOCK,C BLOCK, Q BLOCK AND ESHED	Y	Y		
24	19/01/2023	QUBE	DOLFIJNGRACHT	2301	DAY	106	N	L BLOCK	Y	Y		
25	19/01/2023	QUBE	TORINO	OE228	EVE	105	N	D BLOCK,ESHED, PSHEDED AND N BLOCK	Y	Y		VESSEL BERTHED AT 105 DUE TO 106 AND 107 BEING OCCUPIED.
26	20/01/2023	QUBE	PEGASUS ACE	310	EVE	107	N	107CON, GBLK,C BLOCK,Q BLOCK AND O BLOCK	Y	Y		
27	20/01/2023	LINX	ERIDANUS LEADER	057	EVE	105	N	A BLOCK,C BLOCK,D BLOCK,F BLOCK,H BLOCK,B BLOCK,D BLOCK,F BLOCK,P SHED AND N BLOCK	Y	Y		
28	22/01/2023	QUBE	TASMAN CHIEF	2302E	DAY	106	N	I BLOCK AND L BLOCK	Y	Y		
29	22/01/2023	QUBE	SEA BISCUIT	2023001	DAY	103	N	DIRECT TO HOOK	Y	Y		
30	22/01/2023	QUBE	LIBERTY	NZ207	EVE	105	N	D BLOCK,F BLOCK,H BLOCK,I BLOCK AND N BLOCK	Y	Y		VESSEL BERTHED AT 105 DUE TO 106 AND 107 BEING OCCUPIED.
31	23/01/2023	LINX	HOEGH TOKYO	105	EVE	107	N	107CON,EBLK,GBLK,A BLOCK,C BLOCK,B BLOCK,Q BLOCK,D BLOCK,O BLOCK AND ESHED	Y	Y		B AND D BLOCKS UTILISED AS NOT ENOUGH SPACE IN A AND C BLOCKS
32	24/01/2023	QUBE	TRANS FUTURE 5	145	EVE	105	N	F BLOCK,H BLOCK AND PSHEDED	Y	Y		VESSEL BERTHED AT 105 DUE TO 106 AND 107 BEING OCCUPIED.
33	25/01/2023	N/A	PM MELBOURNE	N/A	DAY	106	N	BARGE - NO CARGO	Y	Y		
34	25/01/2023	LINX	GENTLE LEADER	099	NIGHT	106	N	A BLOCK, B BLOCK, D BLOCK, L BLOCK,M BLOCK AND PSHEDED	Y	Y		A BLOCK UTILISED AS NOT ENOUGH SPACE IN H AND F BLOCKS
35	26/01/2023	LINX	HOEGH COPENHAGEN	079	EVE	107	N	A BLOCK,C BLOCK,Q BLOCK AND O BLOCK	Y	Y		
36	26/01/2023	QUBE	VENUS SPIRIT	65	DAY	105	N	C BLOCK, B BLOCK,D BLOCK AND F BLOCK	Y	Y		C BLOCK UTILISED AS NOT ENOUGH SPACE IN H AND F BLOCKS
37	26/01/2023	QUBE	AAL NINJANG	23001	EVE	106	N	L BLOCK AND RAIL SIDING	Y	Y		
38	27/01/2023	QUBE	PACIFIC PIONEER	13	EVE	103	N	DIRECT TO HOOK	Y	Y		
39	28/01/2023	QUBE	TAMERLANE	AWE302	EVE	107	N	107CON, EBLK, 107STRG,A BLOCK,ESHED AND LINKSPAN	Y	Y		
40	29/10/2022	QUBE	TS HONOUR	2201	EVE	106	N	E SHED, P SHED AND G SHED	Y	Y		
41	29/10/2022	QUBE	SINCERE	123	NIGHT	103	N	DIRECT TO HOOK	Y	Y		

Legend - Berth # and Laydown

Primary
Secondary
Tertiary

SUMMARY	LINX	QUBE
TOTAL VESSELS FOR MONTH	11	29
GREEN BERTH	9	17
ORANGE BERTH	2	12
RED BERTH	0	0
GREEN LAYDOWN	5	21
ORANGE LAYDOWN	3	4
RED LAYDOWN	3	4

NUMBER OF BERTHING DELAYS	0	0
NUMBER OF MACHINERY ISSUES/REQUESTS NOT MET	0	0

SEE ATTACHED SHEETS SHOWING BERTH AND CONGESTION DELAYS

NUMBER	DATE	STEVE-DORE	VESSEL	VOYAGE	STARTING SHIFT	BERTH #	BERTH DELAY	LAYDOWN	MACHINERY REQUEST RECEIVED	MACHINERY REQUEST FILLED	MACHINERY ISSUES	NOTES
1	1/02/2023	QUBE	STAR CALYPSO	123	NIGHT	103	N	DIRECT TO TRUCK	Y	Y		
2	1/02/2023	QUBE	MORNING LYNN	EF228	EVE	107	N	107CON,A BLOCK,C BLOCK, Q BLOCK, ESHED AND I BLOCK	Y	Y		
3	1/02/2023	QUBE	JASPER ARROW	123	EVE	105	N	C BLOCK,D BLOCK, F BLOCK, H BLOCK, PSBED AND NBLOCK	Y	Y		VESSEL BERTHED AT 105 DUE TO 106 AND 107 BEING OCCUPIED. C BLOCK UTILISED AS NOT ENOUGH SPACE IN H AND F BLOCKS
4	1/02/2023	QUBE	MORNING CHERRY	2280	EVE	105	N	A BLOCK,C BLOCK,B BLOCK,D BLOCK,F BLOCK AND N BLOCK	Y	Y		VESSEL BERTHED AT 105 DUE TO 106 AND 107 BEING OCCUPIED. A AND C BLOCKS UTILISED AS NOT ENOUGH SPACE IN H AND F BLOCKS
5	1/02/2023	LINX	HOEGH BANGKOK	73	EVE	107	N	EBLK,A BLOCK,C BLOCK,D BLOCK,Q BLOCK,F BLOCK,H BLOCK AND ESHED	Y	Y		D, F AND H BLOCKS UTILISED AS NOT ENOUGH SPACE IN A AND C BLOCKS
6	2/02/2023	LINX	GREEN LAKE	078	DAY	105	N	D BLOCK, F BLOCK, H BLOCK, R BLOCK AND N BLOCK	Y	Y		VESSEL BERTHED AT 105 DUE TO 106 AND 107 BEING OCCUPIED.
7	3/02/2023	QUBE	BBC MANILA	9004	NIGHT	106	N	I BLOCK	Y	Y		
8	4/02/2023	QUBE	EASTERN HIGHWAY	142	DAY	107	N	GBLK, I BLOCK,B BLOCK AND D BLOCK	Y	Y		B AND D BLOCKS UTILISED AS NOT ENOUGH SPACE IN A AND C
9	4/02/2023	QUBE	POLARIS HIGHWAY	069	DAY	106	N	GBLK,D BLOCK,F BLOCK, GSHED, H BLOCK, R BLOCK, I BLOCK AND L BLOCK	Y	Y		
10	5/02/2023	QUBE	EUPHRATES HIGHWAY	095	DAY	107	N	EBLK,A BLOCK, C BLOCK, B BLOCK, O BLOCK, Q BLOCK, D BLOCK AND H BLOCK	Y	Y		B AND D BLOCKS UTILISED AS NOT ENOUGH SPACE IN A AND C BLOCKS
11	5/02/2023	QUBE	DIVINE ACE	082	DAY	105	N	A BLOCK,B BLOCK,C BLOCK,D BLOCK,F BLOCK,H BLOCK AND N BLOCK	Y	Y		VESSEL BERTHED AT 105 DUE TO 106 AND 107 BEING OCCUPIED. A AND C BLOCKS UTILISED AS NOT ENOUGH SPACE IN H AND F BLOCKS
12	6/02/2023	QUBE	GLOBE EXPLORER	12023	EVE	103	N	DIRECT TO TRUCK	Y	Y		
13	8/02/2023	QUBE	ALKYONIS	202301	NIGHT	103	N	DIRECT TO TRUCK	Y	Y		
14	9/02/2023	QUBE	TRANS FUTURE 6	142	EVE	107	N	107CON,A BLOCK,Q BLOCK,O BLOCK AND ESHED	Y	Y		
15	9/02/2023	QUBE	HAPPY DOVER	2301	DAY	106	N	P SHED	Y	Y		
16	10/02/2023	QUBE	BELUGA ACE	041	DAY	105	N	B BLOCK,D BLOCK,H BLOCK, I BLOCK, PSBED AND N BLOCK	Y	Y		VESSEL BERTHED AT 105 DUE TO 106 AND 107 BEING OCCUPIED.
17	11/02/2023	QUBE	WISTERIA	004	DAY	103	N	DIRECT TO TRUCK	Y	Y		
18	11/02/2023	QUBE	GRAND NEPTUNE	064	DAY	106	N	Q BLOCK, A BLOCK, C BLOCK, O BLOCK AND B BLOCK	Y	Y		A , Q, O AND C BLOCKS UTILISED AS NOT ENOUGH SPACE IN H AND F BLOCKS
19	14/02/2023	LINX	ARTEMIS LEADER	115	DAY	105	N	A BLOCK, B BLOCK,C BLOCK,O BLOCK AND N BLOCK	Y	Y		VESSEL BERTHED AT 105 DUE TO 106 AND 107 BEING OCCUPIED. A, O AND C BLOCKS UTILISED AS NOT ENOUGH SPACE IN H AND F BLOCKS
20	16/02/2023	QUBE	MORNING POST	EE229	DAY	105	N	B BLOCK,R BLOCK,D BLOCK, ESHED,PSBED AND N BLOCK	Y	Y		VESSEL BERTHED AT 105 DUE TO 106 AND 107 BEING OCCUPIED.
21	17/02/2023	QUBE	PAGLIA	2351	DAY	106	N	D BLOCK, F BLOCK,H BLOCK, PSBED AND M BLOCK	Y	Y		
22	17/02/2023	QUBE	ARCH SEATEL	0223	DAY	103	N	DIRECT TO TRUCK	Y	Y		
23	17/02/2023	QUBE	PRIME ACE	073	DAY	107	N	107CON, 107STRG,C BLOCK,Q BLOCK,O BLOCK AND ESHED	Y	Y		
24	18/02/2023	QUBE	CHINA SPIRIT	2216	DAY	106	N	L BLOCK	Y	Y		
25	18/02/2023	QUBE	VIKING PASSAMA	2352	EVE	105	N	B BLOCK,C BLOCK,D BLOCK, F BLOCK, H BLOCK, PSBED AND N BLOCK	Y	Y		VESSEL BERTHED AT 105 DUE TO 106 AND 107 BEING OCCUPIED. C BLOCK UTILISED AS NOT ENOUGH SPACE IN H AND F BLOCKS
26	19/02/2023	QUBE	FIGARO	EF229	DAY	107	N	107STRG,A BLOCK AND ESHED	Y	Y		
27	19/02/2023	LINX	HOEGH TRIGGER	42	DAY	106	N	A BLOCK,B BLOCK,C BLOCK,D BLOCK,F BLOCK, L BLOCK AND PSBED	Y	Y		C BLOCK UTILISED AS NOT ENOUGH SPACE IN H AND F BLOCKS
28	20/02/2023	QUBE	TITANIA	EE230	DAY	107	N	1074CON, I BLOCK,A BLOCK,C BLOCK,O BLOCK,ESHED, GSHED AND I BLOCK	Y	Y		
29	21/02/2023	LINX	GRACEFUL LEADER	113	DAY	105	N	H BLOCK,PSBED AND N BLOCK	Y	Y		VESSEL BERTHED AT 105 DUE TO 106 AND 107 BEING OCCUPIED.
30	22/02/2023	QUBE	GENIUS HIGHWAY	065	DAY	107	N	A BLOCK, C BLOCK, O BLOCK AND ESHED	Y	Y		

31	23/02/2023	QUBE	AAL GIBRALTOR	23001	EVE	106	N	L BLOCK AND RAIL SIDING	Y	Y		
32	24/02/2023	QUBE	TRANS FUTURE 7	142	EVE	107	N	A BLOCK, C BLOCK AND ESHED	Y	Y		
33	25/02/2023	QUBE	TASMAN CHIEF	2302W	NIGHT	106	N	PSHED	Y	Y		
34	25/02/2023	QUBE	TOMBARRA	EE231	DAY	105	N	A BLOCK,B BLOCK,D BLOCK,R BLOCK,ESHED,M BLOCK,PSHED AND N BLOCK	Y	Y		VESSEL BERTHED AT 105 DUE TO 106 AND 107 BEING OCCUPIED. A BLOCK UTILISED AS NOT ENOUGH SPACE IN H AND F BLOCKS
35	25/02/2023	LINX	METIS LEADER	110	DAY	107	N	107CON, 107STRG,C BLOCK,Q BLOCK,O BLOCK AND ESHED	Y	Y		
36	26/02/2023	QUBE	PRESTIGE ACE	184	DAY	105	N	D BLOCK,H BLOCK AND N BLOCK	Y	Y		VESSEL BERTHED AT 105 DUE TO 106 AND 107 BEING OCCUPIED.
37	27/02/2023	QUBE	EGRET RIVER	FEB23	NIGHT	103	N	DIRECT TO TRUCK	Y	Y		
38	27/02/2023	QUBE	LIGNUM FIBER	007	EVE	103	N	DIRECT TO TRUCK	Y	Y		
39	28/02/2023	QUBE	HEROIC ACE	138	EVE	106	N	A BLOCK AND L BLOCK	Y	Y		A BLOCK UTILISED AS NOT ENOUGH SPACE IN H AND F BLOCKS

Legend - Berth # and Laydown

	Primary
	Secondary
	Tertiary

TOTAL VESSELS FOR MONTH	6	33
GREEN BERTH	3	25
ORANGE BERTH	3	8
RED BERTH	0	0
GREEN LAYDOWN	3	26
ORANGE LAYDOWN	2	2
RED LAYDOWN	1	5

NUMBER OF BERTHING DELAYS	0	0	SEE ATTACHED SHEETS SHOWING BERTH AND CONGESTION DELAYS
NUMBER OF MACHINERY ISSUES/REQUESTS NOT MET	0	0	

NUMBER	DATE	STEVE-DORE	VESSEL	VOYAGE	STARTING SHIFT	BERTH #	BERTH DELAY	LAYDOWN	MACHINERY REQUEST RECEIVED	MACHINERY REQUEST FILLED	MACHINERY ISSUES	NOTES
1	1/03/2023	QUBE	LEO SPIRIT	059	DAY	107	N	EBLK, GBLK, 107N, 107STRG, C BLOCK, Q BLOCK, O BLOCK, ESHED AND I BLOCK	Y	Y		
2	2/03/2023	QUBE	ELEGANT ACE	076	DAY	105	N	B BLOCK, D BLOCK, H BLOCK, PSHEDED AND N BLOCK	Y	Y		VESSEL BERTHED AT 105 DUE TO 106 AND 107 BEING OCCUPIED.
3	3/03/2023	QUBE	SE MARINA	2301S	NIGHT	106	N	L BLOCK AND P SHED	Y	Y		
4	3/03/2023	QUBE	TIENTSEN	2301	NIGHT	103	N	DIRECT TO TRUCK	Y	Y		
5	5/03/2023	QUBE	DOVER HIGHWAY	097	EVE	107	N	B BLOCK, C BLOCK, D BLOCK, F BLOCK. B BLOCK, C BLOCK, H BLOCK, R BLOCK	Y	Y		B, D, F, H AND R BLOCKS UTILISED AS NOT ENOUGH SPACE IN C AND A BLOCKS
6	5/03/2023	QUBE	GRAND VISION	215	EVE	105	N	B BLOCK, D BLOCK, F BLOCK, H BLOCK, PSHEDED AND N BLOCK	Y	Y		VESSEL BERTHED AT 105 DUE TO 106 AND 107 BEING OCCUPIED.
7	5/03/2023	QUBE	BASIC CHALLENGER	01	NIGHT	103	N	DIRECT TO TRUCK	Y	Y		
8	7/03/2023	QUBE	TALISMAN	EF230	NIGHT	107	N	107CON, EBLK, GBLK, I BLOCK, A BLOCK, Q BLOCK AND GSHED	Y	Y		
9	8/03/2023	QUBE	VIRONO PRIDE	01	DAY	103	N	DIRECT TO TRUCK	Y	Y		
10	8/03/2023	QUBE	MERWEDEGRACHT	2303	NIGHT	106	N	GSHED	Y	Y		
11	8/03/2023	QUBE	ANIARA	AG303	EVE	107	N	A BLOCK, C BLOCK, I BLOCK AND E SHED	Y	Y		
12	9/03/2023	QUBE	DIGNITY ACE	073	DAY	105	N	B BLOCK, D BLOCK, F BLOCK, H BLOCK, PSHEDED AND N BLOCK	Y	Y		VESSEL BERTHED AT 105 DUE TO 106 AND 107 BEING OCCUPIED.
13	10/03/2023	QUBE	ARC COMMITMENT	EF231	EVE	107	N	EBLK, Q BLOCK, O BLOCK,, ESHED AND I BLOCK	Y	Y		
14	11/03/2023	QUBE	BRAVERY ACE	150	DAY	106	N	B BLOCK, C BLOCK, D BLOCK, F BLOCK, H BLOCK, R BLOCK, K BLOCK, PSHEDED AND L BLOCK	Y	Y		C BLOCK UTILISED AS NOT ENOUGH SPACE IN H AND F BLOCKS
15	11/03/2023	QUBE	TITUS	EF232	DAY	107	N	107CON, I BLOCK, A BLOCK, ESHED AND GSHED	Y	Y		
16	12/03/2023	QUBE	PARSIFAL	NZ301	NIGHT	107	N	GBLK, 107STRG, I BLOCK, C BLOCK, O BLOCK AND GSHED	Y	Y		
17	12/03/2023	QUBE	RIVER GLOBE	1	NIGHT	105	N	DIRECT TO TRUCK	Y	Y		
18	13/03/2023	LINX	ERIDANUS LEADER	058	DAY	106	N	A BLOCK, B BLOCK, C BLOCK, Q BLOCK, D BLOCK, F BLOCK, H BLOCK AND L BLOCK	Y	Y		A, C AND Q BLOCKS UTILISED AS NOT ENOUGH SPACE IN H AND F BLOCKS
19	14/03/2023	QUBE	WESTERN HIGHWAY	152	DAY	107	N	A BLOCK, C BLOCK, Q BLOCK, O BLOCK AND 107STRG	Y	Y		
20	14/03/2023	LINX	CYGNUS LEADER	120	DAY	105	N	A BLOCK, C BLOCK, B BLOCK, F BLOCK, H BLOCK, R BLOCK, PSHEDED AND N BLOCK	Y	Y		VESSEL BERTHED AT 105 DUE TO 106 AND 107 BEING OCCUPIED. A AND C BLOCKS UTILISED AS NOT ENOUGH SPACE IN H AND F BLOCKS
21	16/03/2023	QUBE	RCC TIANJIN	009	EVE	107	N	A BLOCK, C BLOCK, Q BLOCK, O BLOCK AND ESHED	Y	Y		
22	17/03/2023	LINX	HERCULES LEADER	093	EVE	107	N	EBLK, 107CON, A BLOCK, C BLOCK, Q BLOCK, O BLOCK AND ESHED	Y	Y		
23	18/03/2023	QUBE	GRAND DIAMOND	001	DAY	106	N	B BLOCK, C BLOCK, D BLOCK, F BLOCK, K BLOCK AND L BLOCK	Y	Y		C BLOCK UTILISED AS NOT ENOUGH SPACE IN H AND F BLOCKS
24	18/03/2023	QUBE	ES LEADER	1	NIGHT	103	N	DIRECT TO TRUCK	Y	Y		
25	18/03/2023	QUBE	DA DE	58	DAY	105	N	105STRING AND M BLOCK	Y	Y		
26	19/03/2023	LINX	GRANDE MIRAFIORI	123	DAY	106	N	B BLOCK, D BLOCK, F BLOCK AND H BLOCK	Y	Y		
27	20/03/2023	QUBE	ONYX ARROW		DAY	107	N	EBLK, I BLOCK, 107CON, A BLOCK, C BLOCK, O BLOCK AND ESHED	Y	Y		
28	23/03/2023	QUBE	DREAM ANGEL	33	EVE	106	N	B BLOCK, D BLOCK, F BLOCK, H BLOCK, R BLOCK, 106STRG, AND PSHEDED	Y	Y		
29	23/03/2023	QUBE	FIJI	323	EVE	103	N	DIRECT TO TRUCK	Y	Y		
30	24/03/2023	LINX	HOEGH JACKSONVILLE	54	DAY	107	N	A BLOCK, C BLOCK, Q BLOCK, O BLOCK, ESHED AND I BLOCK	Y	Y		
31	24/03/2023	QUBE	PAGANELLA	2303	EVE	105	N	B BLOCK, D BLOCK, F BLOCK, H BLOCK, PSHEDED AND N BLOCK	Y	Y		VESSEL BERTHED AT 105 DUE TO 106 AND 107 BEING OCCUPIED.
32	25/03/2023	LINX	SAGA FREYA	17SZ	NIGHT	106	N		Y	Y		
33	25/03/2023	QUBE	TURANDOT	2354	EVE	105	N	A BLOCK, B BLOCK, C BLOCK, D BLOCK, H BLOCK AND N BLOCK	Y	Y		VESSEL BERTHED AT 105 DUE TO 106 AND 107 BEING OCCUPIED. A AND C BLOCKS UTILISED AS NOT ENOUGH SPACE IN H AND F BLOCKS

34	26/03/2023	QUBE	CARMEN	EF233	DAY	107	N	EBLK, GBLK,A BLOCK,C BLOCK,ESHED,I BLOCK AND LINKSPAN	Y	Y		
35	27/03/2023	LINX	HOEGH SHANGHAI		EVE	107	N	A BLOCK,C BLOCK,Q BLOCK,O BLOCK AND ESHED	Y	Y		
36	27/03/2023	QUBE	DAMGRACHT	2303A	NIGHT	106	N	DIRECT TO TRUCK	Y	Y		
37	28/03/2023	QUBE	KK MINERAL	050	DAY	103	N	DIRECT TO TRUCK	Y	Y		
38	28/03/2023	QUBE	GRAND PACE	002		105	N	D BLOCK, F BLOCK,H BLOCK,R BLOCK,M BLOCK AND PSHEd	Y	Y		VESSEL BERTHED AT 105 DUE TO 106 AND 107 BEING OCCUPIED.

Legend - Berth # and Laydown

	Primary
	Secondary
	Tertiary

TOTAL VESSELS FOR MONTH	7	31	
GREEN BERTH	5	23	
ORANGE BERTH	2	8	
RED BERTH	0	0	
GREEN LAYDOWN	5	27	
ORANGE LAYDOWN	0	2	
RED LAYDOWN	2	2	
NUMBER OF BERTHING DELAYS	0	0	SEE ATTACHED SHEETS SHOWING BERTH AND CONGESTION DELAYS
NUMBER OF MACHINERY ISSUES/REQUESTS NOT MET	0	0	

NUMBER	DATE	STEVE-DORE	VESSEL	VOYAGE	STARTING SHIFT	BERTH #	BERTH DELAY	LAYDOWN	MACHINERY REQUEST RECEIVED	MACHINERY REQUEST FILLED	MACHINERY ISSUES	NOTES
1	1/04/2023	QUBE	CSAV RIO NEVADO	008	DAY	107	Y	A BLOCK,C BLOCK,Q BLOCK AND O BLOCK	Y	Y		
2	1/04/2023	LINX	DAMGRACHT		NIGHT	106	Y	G SHED AND TQ1	Y	Y		
3	1/04/2023	QUBE	BRASILIA HIGHWAY	144	EVE	105	Y	B BLOCK,C BLOCK,D BLOCK,F BLOCK AND H BLOCK	Y	Y		C BLOCK UTILISED AS NOT ENOUGH SPACE IN H, F,D AND B BLOCKS. VESSEL BERTHED AT 105 DUE TO 106 AND 107 BEING OCCUPIED.
4	1/04/2023	QUBE	SUMMER SKY	23	NIGHT	103	N	DIRECT TO HOOK	Y	Y		
5	2/04/2023	QUBE	MORNING LUCY	EE233	DAY	107	Y	107CON, EBLK, GBLK, Q BLOCK,O BLOCK AND E SHED	Y	Y		VESSEL BERTHED AT 105 DUE TO 106 AND 107 BEING OCCUPIED.
6	4/04/2023	QUBE	VAN INFINITY	01	EVE	103	N	DIRECT TO HOOK	Y	Y		
7	5/04/2023	QUBE	SWIFT ACE	123	DAY	106	Y	C BLOCK, H BLOCK, L BLOCK AND P SHED	Y	Y		C BLOCK UTILISED AS NOT ENOUGH SPACE IN H, F,D AND B BLOCKS.
8	5/04/2023	QUBE	KOTA BAHAGIA	2304E	DAY	105	Y	M BLOCK	Y	Y		
9	5/04/2023	QUBE	NABUCCO	EF234	DAY	107	Y	A BLOCK,C BLOCK, Q BLOCK, ESHED AND I BLOCK	Y	Y		
10	6/04/2023	QUBE	TRANS FUTURE 5	146	NIGHT	107	Y	A BLOCK,C BLOCK,Q BLOCK AND G SHED	Y	Y		
11	6/04/2023	QUBE	LUNA SPIRIT	146	NIGHT	106	Y	B BLOCK,C BLOCK,D BLOCK,F BLOCK, R BLOCK, L BLOCK AND PSHED	Y	Y		C BLOCK UTILISED AS NOT ENOUGH SPACE IN H, F,D AND B BLOCKS.
12	8/04/2023	QUBE	GOLD OAK	2302	NIGHT	106	Y	G SHED	Y	Y		
13	8/04/2023	QUBE	DESERT DIGNITY	1	NIGHT	103	Y	DIRECT TO HOOK	Y	Y		
14	8/04/2023	LINX	HOEGH LONDON	104	DAY	107	Y	107CON, EBLK, GBLK,B BLOCK,C BLOCK,D BLOCK,O BLOCK AND ESHED	Y	Y		B BLOCK UTILISED AS NOT ENOUGH SPACE IN A, C,Q AND O BLOCKS.
15	8/04/2023	QUBE	DL MARIGOLD	23070	EVE	105	Y	DIRECT TO HOOK	Y	Y		
16	9/04/2023	QUBE	IRIS ACE	073	DAY	106	Y	B BLOCK, D BLOCK, F BLOCK, H BLOCK, M BLOCK AND PSHED	Y	Y		
17	10/04/2023	LINX	GENTLE LEADER	100	EVE	107	Y	EBLK,GBLK, 107STRG,A BLOCK,B BLOCK,C BLOCK,Q BLOCK,O BLOCK AND ESHED	Y	Y		B BLOCK UTILISED AS NOT ENOUGH SPACE IN A, C,Q AND O BLOCKS.
18	11/04/2023	QUBE	NEW CENTURY 2	177	DAY	105	Y	A BLOCK, C BLOCK,F BLOCK AND H BLOCK	Y	Y		VESSEL BERTHED AT 105 DUE TO 106 AND 107 BEING OCCUPIED. A AND C BLOCKS UTILISED AS NOT ENOUGH SPACE IN H,F,D OR B BLOCKS
19	12/04/2023	QUBE	AAL NANJING	23003	DAY	103	Y	103 STRG	Y	Y		
20	13/04/2023	QUBE	POLARIS HIGHWAY	070	DAY	106	Y	B BLOCK, D BLOCK, F BLOCK, L BLOCK AND M BLOCK	Y	Y		
21	13/04/2023	LINX	HOEGH TRAVELLER	38	DAY	107	Y	A BLOCK,Q BLOCK AND O BLOCK	Y	Y		
22	15/04/2023	LINX	ASTERIA LEADER	018	EVE	106	Y	H BLOCK, F BLOCK, D BLOCK ,B BLOCK, PSHED AND L BLOCK	Y	Y		
23	15/04/2023	QUBE	DON JUAN	2355	EVE	105	Y	B BLOCK,D BLOCK,C BLOCK,F BLOCK,H BLOCK, R BLOCK, M BLOCK,, PSHED AND N BLOCK	Y	Y		VESSEL BERTHED AT 105 DUE TO 106 AND 107 BEING OCCUPIED. C BLOCK UTILISED AS NOT ENOUGH SPACE IN H,F,D OR B BLOCKS
24	15/04/2023	QUBE	MIGNON	EE235	EVE	107	Y	EBLK,GBLK, 107STRG, A BLOCK,C BLOCK,O BLOCK,ESHD AND I BLOCK	Y	Y		
25	17/04/2023	QUBE	ICS SILVER SPIRIT	66	EVE	103	N	DIRECT TO HOOK	Y	Y		
26	18/04/2023	QUBE	MORNING LADY	EE234	NIGHT	107	Y	107STRG,A BLOCK,C BLOCK,Q BLOCK,O BLOCK,ESHD AND GSHED	Y	Y		
27	19/04/2023	QUBE	SUMATRA	15	NIGHT	103	Y	DIRECT TO HOOK	Y	Y		
28	20/04/2023	QUBE	ORCA ACE	039	DAY	107	Y	GBLK, Q BLOCK AND O BLOCK	Y	Y		
29	20/04/2023	LINX	BBC BASILISK	1340006	NIGHT	106	Y	LOAD ONLY	Y	Y		
30	20/04/2023	QUBE	DOVER HIGHWAY	098	NIGHT	107	Y	A BLOCK,B BLOCK,C BLOCK,Q BLOCK,O BLOCK,ESHD AND I BLOCK	Y	Y		B BLOCK UTILISED AS NOT ENOUGH SPACE IN A, C,Q AND O BLOCKS.
31	22/04/2023	QUBE	AMBER ARROW	141	EVE	105	Y	A BLOCK,B BLOCK,C BLOCK,D BLOCK,F BLOCK,H BLOCK,L BLOCK,PSHD AND N BLOCK	Y	Y		VESSEL BERTHED AT 105 DUE TO 106 AND 107 BEING OCCUPIED. A AND C BLOCKS UTILISED AS NOT ENOUGH SPACE IN H,F,D OR B BLOCKS
32	23/04/2023	LINX	HOEGH ASIA	166	DAY	107	Y	A BLOCK,C BLOCK,Q BLOCK,D BLOCK,107CON, EBLK AND 107STRG	Y	Y		D BLOCK UTILISED AS NOT ENOUGH SPACE IN A, C,Q AND O BLOCKS.
33	26/04/2023	QUBE	TARIFA	EE302	EVE	107	Y	107CON, EBLK,GBLK, 107STRG, A BLOCK, Q BLOCK, ESHED AND GSHED	Y	Y		
34	26/04/2023	LINX	HOEGH NEW YORK	138	DAY	106	Y	A BLOCK,B BLOCK,C BLOCK,F BLOCK,H BLOCK,ESHD, M BLOCK, I BLOCK, L BLOCK AND PSHED	Y	Y		A AND C BLOCKS UTILISED AS NOT ENOUGH SPACE IN H,F,D OR B BLOCKS
35	27/04/2023	QUBE	TRANS FUTURE 7	143	EVE	107	Y	A BLOCK,C BLOCK, Q BLOCK AND ESHED	Y	Y		
36	27/04/2023	QUBE	PAN DAISY	109	DAY	103	Y	DIRECT TO HOOK	Y	Y		
37	28/04/2023	LINX	SARA LEADER	035	DAY	105	Y	B BLOCK,D BLOCK,F BLOCK,H BLOCK,M BLOCK, P SHED AND N BLOCK	Y	Y		VESSEL BERTHED AT 105 DUE TO 106 AND 107 BEING OCCUPIED.
38	28/04/2023	QUBE	PRESTIGE ACE	185	EVE	106	Y	B BLOCK,C BLOCK,D BLOCK,F BLOCK AND N BLOCK	Y	Y		C BLOCK UTILISED AS NOT ENOUGH SPACE IN H, F,D AND B BLOCKS.
39	29/04/2023	QUBE	JEWEL OF SHINAS	2	DAY	103	Y	DIRECT TO HOOK	Y	Y		
40	29/04/2023	QUBE	TRAVIATA	EF302	DAY	107	Y	107CON, EBLK, I BLOCK,A BLOCK,C BLOCK,Q BLOCK,O BLOCK,ESHD AND GSHED	Y	Y		

Legend - Berth # and Laydown
 Primary
 Secondary
 Tertiary

SUMMARY	LINX	QUBE
TOTAL VESSELS FOR MONTH	9	31
GREEN BERTH	7	27
ORANGE BERTH	2	4
RED BERTH	0	0
GREEN LAYDOWN	5	23
ORANGE LAYDOWN	3	6
RED LAYDOWN	1	2

NUMBER OF BERTHING DELAYS 9 28
NUMBER OF MACHINERY ISSUES/REQUESTS NOT MET 0 0
SEE ATTACHED SHEETS SHOWING BERTH AND CONGESTION DELAYS

NUMBER	DATE	STEVE-DORE	VESSEL	VOYAGE	STARTING SHIFT	BERTH #	BERTH DELAY	LAYDOWN	MACHINERY REQUEST RECEIVED	MACHINERY REQUEST FILLED	MACHINERY ISSUES	NOTES
1	1/05/2023	LINX	DIAMANTGRACHT	2305	NIGHT	107	Y	DIRECT TO HOOK	Y	Y		
2	2/05/2023	QUBE	MORNING CHERRY	2356	EVE	105	Y	A BLOCK,D BLOCK,F BLOCK,H BLOCK,PSHED AND N BLOCK	Y	Y		A BLOCK UTILISED AS NOT ENOUGH SPACE IN H, F,D AND B BLOCKS. VESSEL BERTHED AT 105 DUE TO 106 AND 107 BEING OCCUPIED.
3	3/05/2023	QUBE	VIKING SEA	009	DAY	106	Y	C BLOCK, B BLOCK, Q BLOCK, O BLOCK, H BLOCK, M BLOCK, L BLOCK AND R BLOCK	Y	Y		C BLOCKSUTILISED AS NOT ENOUGH SPACE IN H,F,D AND B
4	4/05/2023	QUBE	TANNHAUSER	EF301	DAY	107	Y	107CON, EBLK, GBLK,Q BLOCK,O BLOCK, ESHED AND I BLOCK	Y	Y		
5	5/05/2023	QUBE	KOTA BAHAGIA	2306E	DAY	105	Y	L BLOCK AND N BLOCK	Y	Y		
6	6/05/2023	QUBE	GENIUS HIGHWAY	066	EVE	107	Y	107CON,GBLK,I BLOCK,A BLOCK,C BLOCK,Q BLOCK,O BLOCK AND ESHED	Y	Y		
7	6/05/2023	QUBE	GLOVIS COURAGE	001	EVE	106	Y	B BLOCK,D BLOCK,F BLOCK,H BLOCK,R BLOCK, L BLOCK, M BLOCK AND PSHED	Y	Y		
8	6/05/2023	QUBE	TAWAKI	01	DAY	103	Y	DIRECT TO TRUCK	Y	Y		
9	9/05/2023	QUBE	BASIC CHALLENGER	23085	DAY	106	Y	DIRECT TO TRUCK	Y	Y		
10	9/05/2023	QUBE	MEDITERRANEAN SEA	055	DAY	107	Y	A BLOCK, C BLOCK, Q BLOCK AND O BLOCK	Y	Y		
11	11/05/2023	QUBE	VIKING EMERALD	012	DAY	106	Y	B BLOCK, D BLOCK, F BLOCK, H BLOCK AND R BLOCK	Y	Y		
12	12/05/2023	QUBE	APEX VOYAGER	2303	DAY	105	Y	N BLOCK AND P SHED	Y	Y		
13	12/05/2023	QUBE	BRAVERY ACE	151	EVE	107	Y	C BLOCK, Q BLOCK, Q BLOCK, A BLOCK, 107CON, ESHED AND EBLK	Y	Y		
14	14/05/2023	QUBE	DREAM JASMINE	026	NIGHT	106	Y	B BLOCK,D BLOCK,F BLOCK, AND H BLOCK	Y	Y		
15	17/05/2023	QUBE	MERCURY ACE	092	EVE	107	Y	107CON, EBLK,A BLOCK,C BLOCK,Q BLOCK, O BLOCK AND ESHED	Y	Y		
16	17/05/2023	LINX	BBC WESER	1101041	EVE	106	Y	LOAD ONLY	Y	Y		
17	18/05/2023	LINX	ARTEMIS LEADER	116	DAY	105	Y	B BLOCK,D BLOCK, F BLOCK,R BLOCK,E SHED,L BLOCK AND M BLOCK	Y	Y		VESSEL BERTHED AT 105 DUE TO 106 AND 107 BEING OCCUPIED.
18	19/05/2023	QUBE	TONSBERG	EF304	DAY	107	Y	A BLOCK,C BLOCK,O BLOCK,ESHED AND I BLOCK	Y	Y		
19	21/05/2023	QUBE	IVORY ARROW	149	EVE	107	Y	107CON,A BLOCK,C BLOCK,Q BLOCK,O BLOCK AND GSHED	Y	Y		
20	21/05/2023	LINX	HOEGH OSLO	109	EVE	105	Y	B BLOCK,D BLOCK, F BLOCK, H BLOCK,ESHED, SHED, I BLOCK, PSHED AND N BLOCK	Y	Y		VESSEL BERTHED AT 105 DUE TO 106 AND 107 BEING OCCUPIED. ESHED USED DUE TO DEPT OR AGRICULTURE REQUIREMENTS
21	22/05/2023	QUBE	HSL CHICAGO	0523	NIGHT	103	Y	DIRECT TO TRUCK	Y	Y		
22	24/05/2023	LINX	HOEGH BERLIN	120	DAY	107	Y	107CON, EBLK, GBLK, A BLOCK,C BLOCK, Q BLOCK,D BLOCK AND GSHED	Y	Y		D BLOCK UTILISED AS NOT ENOUGH SPACE IN A,C,Q AND O
23	24/05/2023	QUBE	DUGONG ACE	037	DAY	105	Y	B BLOCK,D BLOCK,F BLOCK AND L BLOCK	Y	Y		VESSEL BERTHED AT 105 DUE TO 106 AND 107 BEING OCCUPIED. H NOT UTILISED AS NO ENOUGH SPACE
24	25/05/2023	QUBE	TORONTO	EE303	DAY	107	Y	107CON, EBLK, GBLK, 107STRG,A BLOCK,C BLOCK,Q BLOCK, O BLOCK, GSHED AND I BLOCK	Y	Y		
25	26/05/2023	QUBE	STAMFORD EAGLE	0523	NIGHT	103	Y	DIRECT TO TRUCK	Y	Y		
26	27/05/2023	LINX	HOEGH TRAPPER	39	DAY	107	Y	107CON,GBLK,I BLOCK,A BLOCK, B BLOCK,C BLOCK,D BLOCK,O BLOCK,F BLOCK, H BLOCK AND ESHED	Y	Y		B BLOCK AND BLOCK UTILISED AS NOT ENOUGH SPACE IN A,C,Q AND O
27	27/05/2023	QUBE	AFRICAN GROUSE	7	EVE	105	Y	DIRECT TO TRUCK	Y	Y		
28	28/05/2023	QUBE	PAGANELLA	2358	EVE	106	Y	A BLOCK,B BLOCK,C BLOCK,D BLOCK,F BLOCK,H BLOCK,L BLOCK AND P SHED	Y	Y		A AND C BLOCKS UTILISED AS NOT ENOUGH SPACE IN H,F,D AND B
29	29/05/2023	QUBE	FRONTIER ACE	194	EVE	107	Y	EBLK, 107STRG,A BLOCK,C BLOCK,Q BLOCK,O BLOCK AND ESHED	Y	Y		
30	30/05/2023	QUBE	VIKING PASSAMA	2357	NIGHT	105	Y	B BLOCK, D BLOCK,F BLOCK,H BLOCK, R BLOCK ,PSHED AND N BLOCK	Y	Y		VESSEL BERTHED AT 105 DUE TO 106 AND 107 BEING OCCUPIED.
31	30/05/2023	LINX	APHRODITE LEADER	036	DAY	106	Y	A BLOCK, C BLOCK, Q BLOCK, O BLOCK, L BLOCK AND PSHED	Y	Y		

Legend - Berth # and Laydown

Primary
Secondary
Tertiary

TOTAL VESSELS FOR MONTH	7	24
GREEN BERTH	5	21
ORANGE BERTH	2	3
RED BERTH	0	0
GREEN LAYDOWN	5	20
ORANGE LAYDOWN	2	3
RED LAYDOWN	0	1

NUMBER OF BERTHING DELAYS 7 24 SEE ATTACHED SHEETS SHOWING BERTH AND CONGESTION DELAYS

NUMBER OF MACHINERY ISSUES/REQUESTS NOT MET 0 0

NUMBER	DATE	STEVE-DORE	VESSEL	VOYAGE	STARTING SHIFT	BERTH #	BERTH DELAY	LAYDOWN	MACHINERY REQUEST RECEIVED	MACHINERY REQUEST FILLED	MACHINERY ISSUES	NOTES
1	1/06/2023	QUBE	ELEGANT ACE	077	EVE	107	Y	EBLK,GBLK,A BLOCK,B BLOCK,C BLOCK,Q BLOCK, D BLOCK, O BLOCK, F BLOCK AND H BLOCK	Y	Y		B AND D BLOCKS UTILISED AS NOT ENOUGH SPACE IN A, C,Q AND O BLOCKS.
2	3/06/2023	QUBE	KOTA BAHAGIA	2306E	DAY	106	Y	L BLOCK AND N BLOCK	Y	Y		
3	5/06/2023	QUBE	SINLIGHT ACE	111	DAY	105	Y	A BLOCK,B BLOCK,D BLOCK,F BLOCK,H BLOCK, R BLOCK AND N BLOCK	Y	Y		VESSEL BERTHED AT 105 DUE TO 106 AND 107 BEING OCCUPIED.
4	5/06/2023	QUBE	KEN BOS	23100	EVE	103	N	DIRECT TO TRUCK	Y	Y		
5	5/06/2023	QUBE	CHIPOL TAIAN	2301	EVE	106	Y	RAIL SIDING, PSHED AND L BLOCK	Y	Y		
6	6/06/2023	LINX	ERIDANUS LEADER	059	EVE	107	Y	A BLOCK,C BLOCK AND Q BLOCK	Y	Y		
7	7/06/2023	QUBE	DREAM BEAUTY	013	EVE	105	Y	B BLOCK,D BLOCK,O BLOCK,F BLOCK,H BLOCK, PSEHD AND N BLOCK	Y	Y		VESSEL BERTHED AT 105 DUE TO 106 AND 107 BEING OCCUPIED. O BLOCK UTILISED AS NOT ENOUGH SPACE IN H, F, D AND B BLOCKS
8	8/06/2023	QUBE	DONG-A-GLAUCOS	001	EVE	107	Y	A BLOCK,B BLOCK,C BLOCK,Q BLOCK AND O BLOCK	Y	Y		B BLOCK UTILISED AS NOT ENOUGH SPACE IN A,C,Q AND O BLOCKS
9	8/06/2023	LINX	EMMA OLDENDORFF	163	DAY	106	Y	LOAD ONLY	Y	Y		
10	8/06/2023	QUBE	EUPHRATES HIGHWAY	097	EVE	105	Y	B BLOCK,C BLOCK,D BLOCK,F BLOCK AND H BLOCK	Y	Y		VESSEL BERTHED AT 105 DUE TO 106 AND 107 BEING OCCUPIED. C BLOCK UTILISED AS NOT ENOUGH SPACE IN H, F, D AND B BLOCKS
11	11/06/2023	QUBE	DELINA	23087	DAY	103	N	DIRECT TO TRUCK	Y	Y		
12	12/06/2023	QUBE	AAL SHANGHAI	23004	DAY	106	Y	H BLOCK, L BLOCK, G SHED AND TQ	Y	Y		
13	14/06/2023	LINX	HOEGH BANGKOK	075	DAY	107	Y	107CON, EBLK, GBLK, A BLOCK, C BLOCK, Q BLOCK ,O BLOCK AND ESHED	Y	Y		
14	15/06/2023	QUBE	GRAND EAGLE	025	EVE	106	Y	B BLOCK, D BLOCK, F BLOCK, H BLOCK AND R BLOCK	Y	Y		
15	15/06/2023	LINX	KULTUS COVE	53	NIGHT	105	Y	LOAD ONLY				
16	15/06/2023	QUBE	SALOME	EE306	EVE	107	Y	107CON, EBLK,GBLK,107STRG, A BLOCK,B BLOCK,C BLOCK,ESHED AND I BLOCK	Y	Y		B BLOCK UTILISED AS NOT ENOUGH SPACE IN A,C,Q AND O BLOCKS
17	15/06/2023	QUBE	MARITIME LONGEVITY	2	EVE	103	N	DIRECT TO TRUCK	Y	Y		
18	17/06/2023	QUBE	MORNING CRYSTAL	2359	DAY	106	Y	B BLOCK,D BLOCK,F BLOCK,H BLOCK,L BLOCK AND N BLOCK	Y	Y		
19	18/06/2023	QUBE	DOKOS	0623	DAY	103	Y	DIRECT TO TRUCK	Y	Y		
20	19/06/2023	QUBE	VALIANT ACE	089	EVE	107	Y	107CON,A BLOCK,C BLOCK,Q BLOCK,D BLOCK,O BLOCK AND ESHED	Y	Y		B BLOCK UTILISED AS NOT ENOUGH SPACE IN A,C,Q AND O BLOCKS
21	19/06/2023	QUBE	ORCA ACE	040	EVE	105	Y	B BLOCK, D BLOCK,F BLOCK,H BLOCK,R BLOCK AND N BLOCK	Y	Y		VESSEL BERTHED AT 105 DUE TO 106 AND 107 BEING OCCUPIED.
22	20/06/2023	LINX	SAGA DISCOVERY	5852	EVE	106	Y	G SHED	Y	Y		
23	22/06/2023	QUBE	GLOVIS CARAVEL	043	EVE	107	Y	A BLOCK, C BLOCK, Q BLOCK AND O BLOCK	Y	Y		
24	23/06/2023	QUBE	FUJITRANS WORLD	317	EVE	105	Y	B BLOCK,D BLOCK, F BLOCK AND H BLOCK	Y	Y		VESSEL BERTHED AT 105 DUE TO 106 AND 107 BEING OCCUPIED.
25	24/06/2023	QUBE	CHIPOL XIONGAN	2325	NIGHT	106	Y	L BLOCK, P SHED AND RAIL SIDING	Y	Y		
26	24/06/2023	QUBE	PAGNA	21	DAY	105	Y	B BLOCK, D BLOCK,F BLOCK,H BLOCK, M BLOCK AND N BLOCK	Y	Y		VESSEL BERTHED AT 105 DUE TO 106 AND 107 BEING OCCUPIED.
27	25/06/2023	QUBE	PACIFIC ISLAND	110	DAY	103	Y	DIRECT TO TRUCK	Y	Y		
28	26/06/2023	LINX	GRANDE HOUSTON	223	DAY	106	Y	A BLOCK,C BLOCK AND I BLOCK	Y	Y		
29	27/06/2023	QUBE	TYSLA	EF307	DAY	107	Y	107CON, EBLK,GBLK,Q BLOCK AND ESHED	Y	Y		
30	30/06/2023	QUBE	KYOWA ROSE	051	NIGHT	106	N	I BLOCK AND L BLOCK	Y	Y		

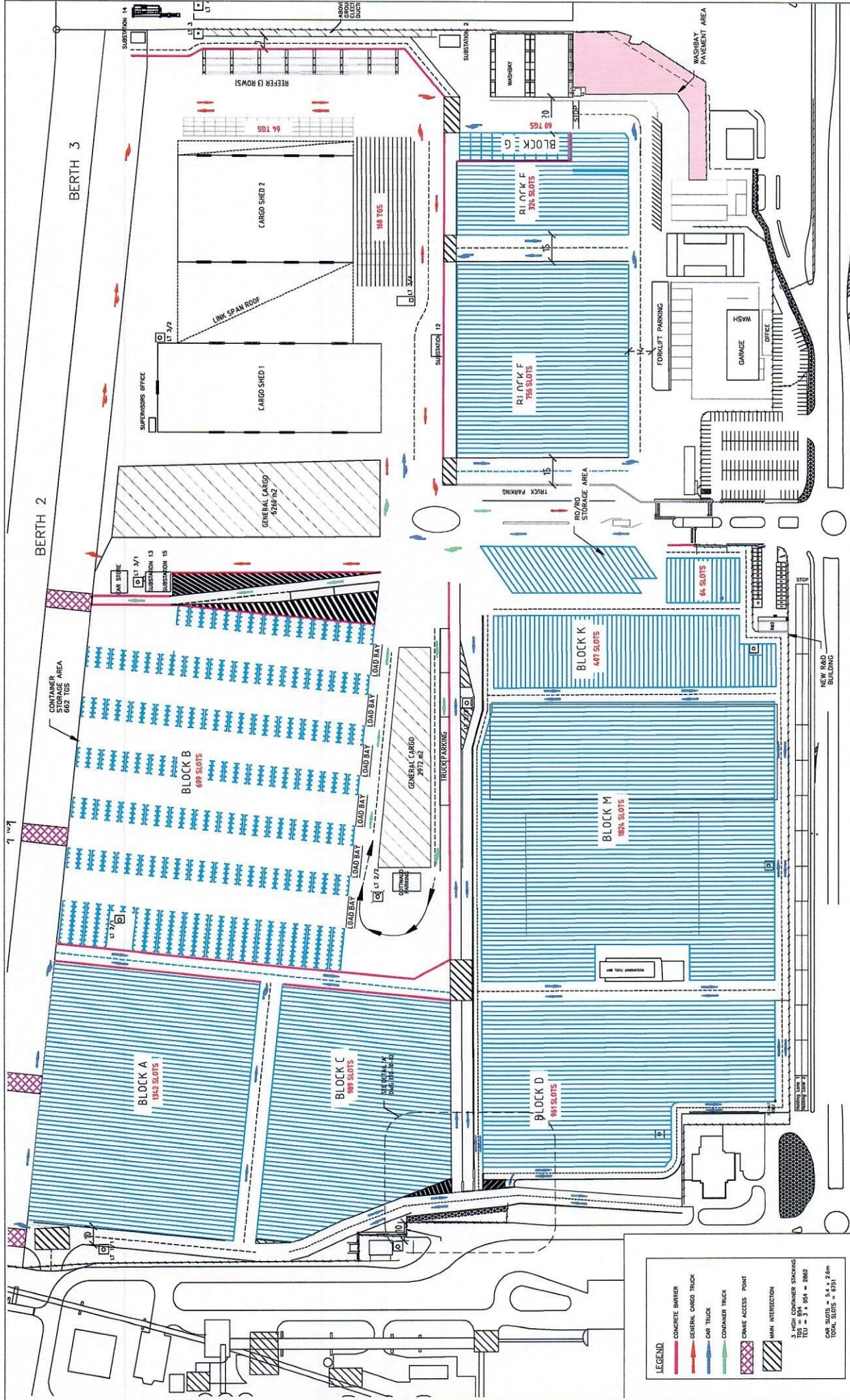
Legend - Berth # and Laydown

Primary	Secondary	Tertiary
---------	-----------	----------

TOTAL VESSELS FOR MONTH	6	24
GREEN BERTH	6	18
ORANGE BERTH	0	6
RED BERTH	0	0
GREEN LAYDOWN	6	18
ORANGE LAYDOWN	0	4
RED LAYDOWN	0	2

NUMBER OF BERTHING DELAYS	6	20	SEE ATTACHED SHEETS SHOWING BERTH AND CONGESTION DELAYS
NUMBER OF MACHINERY ISSUES/REQUESTS NOT MET	0	0	

PART B – TERMINAL LAYOUT FISHERMAN ISLANDS AND PORT KEMBLA



LEGEND

- CONCRETE BARRIER
- GENERAL CARGO TRUCK
- CAR TRUCK
- CONTAINER TRUCK
- CRANE ACCESS POINT
- MAIN INTERSECTION

3 HIGH CONTAINER STAGING
 100' = 854
 100' = 854
 100' = 854
 TOTAL SLOTS = 8731

Project AAT FISHERMAN ISLANDS TERMINAL
Drawing Title C1 - LINEMARKING WORKS
GENERAL ARRANGEMENT

Client: James Rose Consulting
 Unit F21, 1-16 Barr Street
 Brisbane QLD 4004
 Phone: 07 3555 8559
 Fax: 07 3555 8559
 Email: info@jamesrose.com.au
 www.jamesrose.com.au

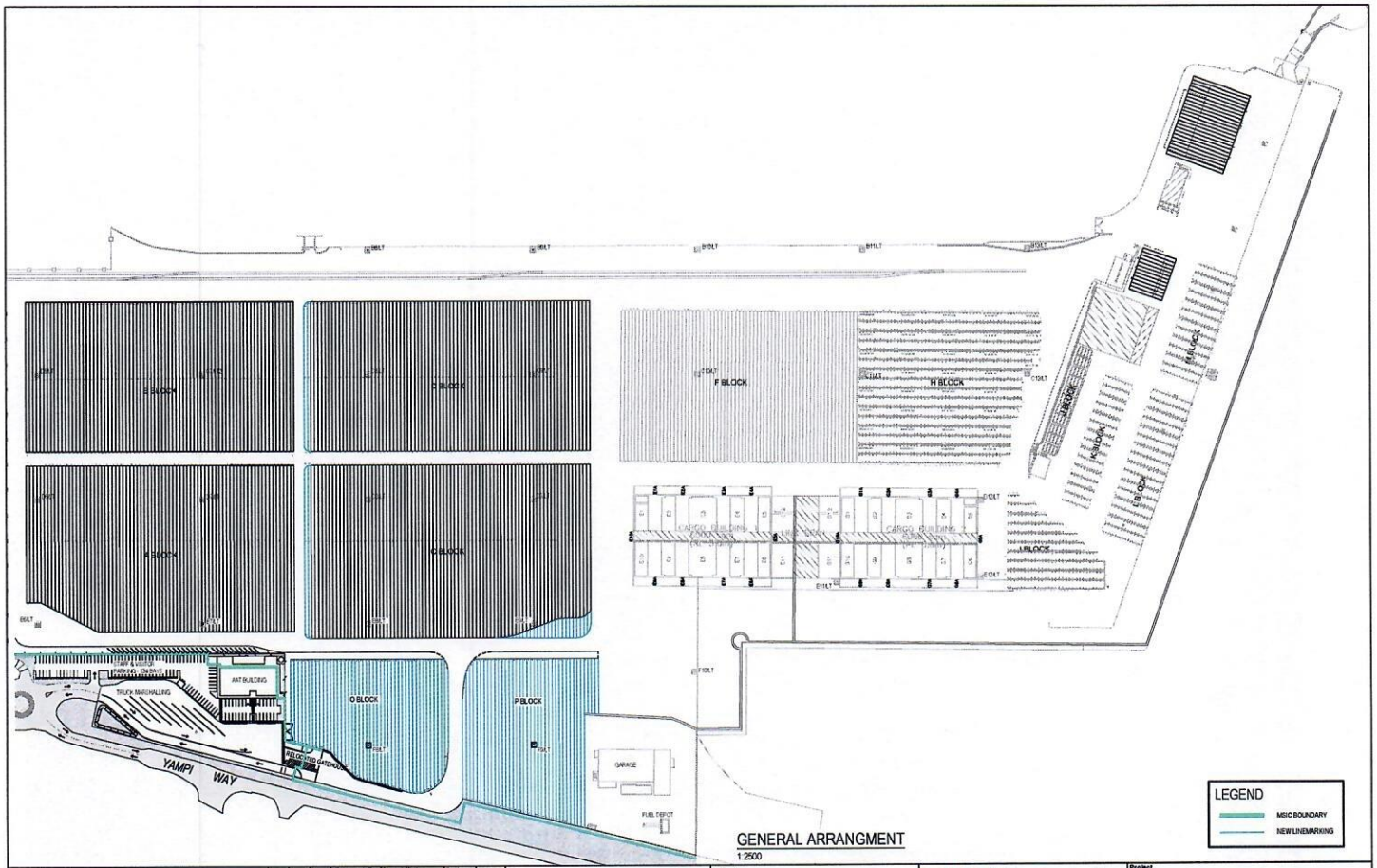
Scale: A3
 1:2000

Prepared By	Signed	Date	Checked By	Signed	Date
PL	DN	04/05/19	DN	DM	04/05/19
PL	DN	20/05/19	DN	DM	20/05/19



04/05/19 BLOCK B AMENDED
 20/05/19 FOR INFORMATION

REV DATE BY Ver. App. Description

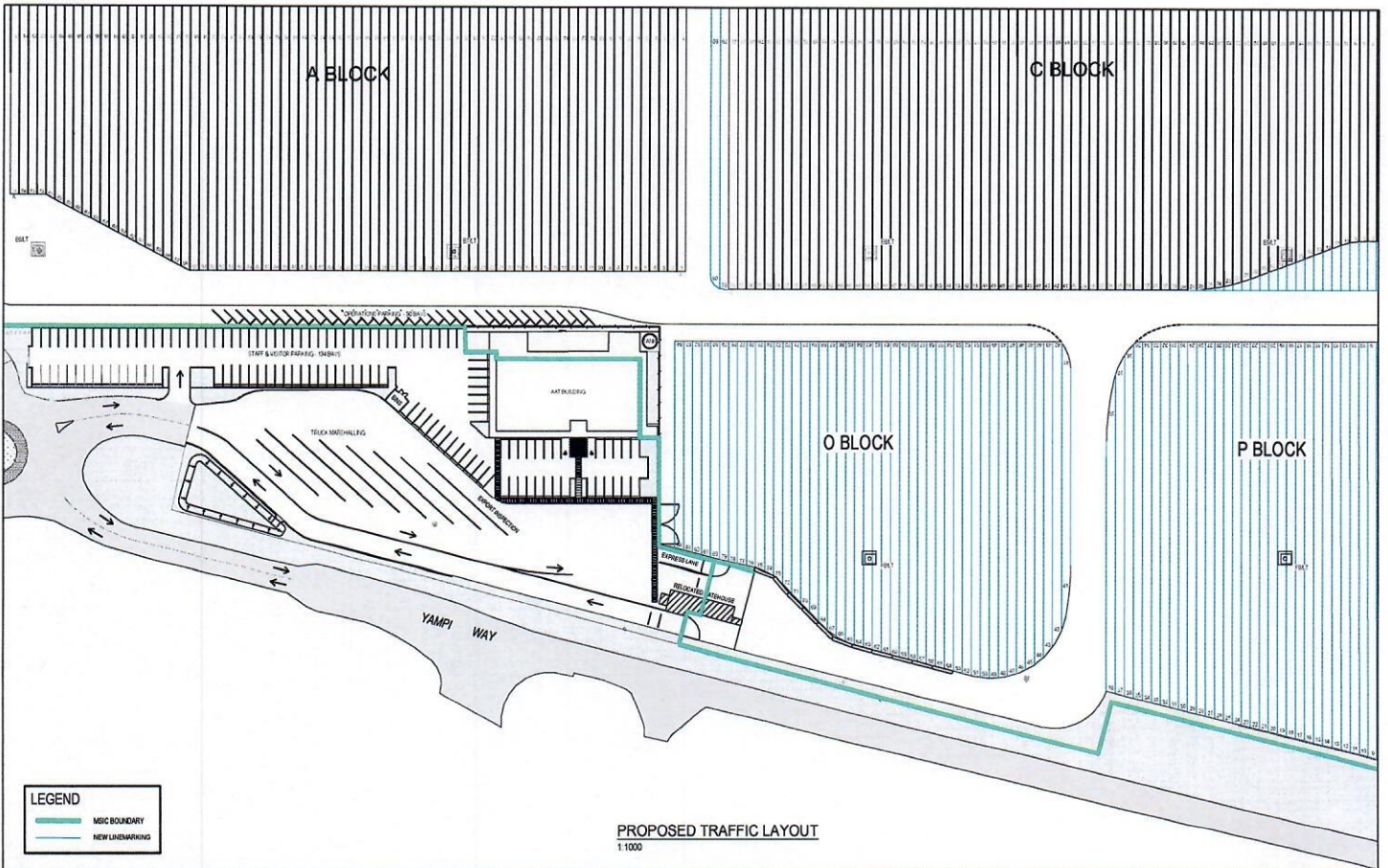
REVISIONS AND ISSUES



GENERAL ARRANGMENT
1:2500

B 31/10/10 REVISION FOR CLIENT COMMENTS A 16/10/10 DRAFT FOR CLIENT REVIEW		PL DM DM DM PL DM DM DM	Prepared By PL DM DM DM Verified By DM DM DM DM Approved By DM DM DM DM	Signed Date 31/10/10 31/10/10 31/10/10 31/10/10	Scale 1:2500 A3	Client:  Australian Amalgamated Terminals	 James Rose Consulting ABN 64 175 064 511 Unit F21, 1-15 Barr Street SALAMAN NSW 2041 PH 02 9555 8568 FAX 02 9555 8599 mail@jamesrose.com.au www.jamesrose.com.au	Project AAT PORT KEMBLA TERMINAL REDEVELOPMENT Drawing Title GENERAL ARRANGEMENT Status DRAFT Project No. 433 Drawing No. 433-C-01 Rev. 8
---	--	----------------------------	--	---	-----------------------	---	---	---





9 31/10/19 REVISED FOR CLIENT COMMENTS 8 19/10/19 DRAFT FOR CLIENT REVIEW	PL PL DM DM PL PL DM DM	Prepared By PL Checked By DM Approved By DM Horizontal Datum N/A Vertical Datum AND	Signed Date 31/10/19 Scale 1:1000 A3		AAT Australian Amalgamated Terminals	JRC James Rose Consulting ABN 64 175 064 511 Unit F21,1-15 Barr Street BALMAIN NSW 2041 PH 02 9555 8585 FAX 02 9555 8599 mail@jamesrose.com.au www.jamesrose.com.au	Project AAT PORT KEMBLA WOLLONGONG, NSW Drawing Title PROPOSED TRAFFIC LAYOUT

PART C: TERMINAL USERS IN WHICH QUBE OR A QUBE RELATED ENTITY HAS AN INTEREST

Qube or a Qube Related Entity has a direct or indirect interest greater than or equal to 20% in the following Terminal Users who provided Stevedoring Services or PDI Operator Services at the following Terminals during the period covered by this Compliance Report:

Port Kembla Terminal

Qube Ports Pty Ltd ACN 123 021 492

Prixcar Services Pty Ltd ACN 007 063 505

Brisbane Terminal

Qube Ports Pty Ltd ACN 123 021 492

Prixcar Services Pty Ltd ACN 007 063 505

AAT SEMI-ANNUAL COMPLIANCE REPORT – MELBOURNE TERMINAL

REPORT PERIOD: 1ST Jan 2023 to 30th Jun 2023

DATE OF REPORT: 17th July 2023

1. Complaints raised either directly with AAT or under the Non-Price Dispute Resolution Process

No.	Type of Complaint	Outcome of the Complaint
NIL		

2. Breaches of Clause 6 – Confidentiality and Ring-Fencing

No.	Type of Breach	Details of Breach	Response to the Breach
NIL			

3. Access Services

Details of any circumstance in which AAT offers Access Services to Qube or any other Qube Related Entity that are more favourable than the terms offered to any other Service Provider.

NIL

4. Contractual Arrangements

Details of any offer, or any contractual arrangement between AAT and a shipping line, that involved terms that:

- (A) link or otherwise relate in any way to the shipping line using Qube or a Qube Related Entity to supply Terminal Services at Melbourne Terminal;
- (B) obliged the shipping line to engage suppliers of Terminal Services that met certain requirements that only Qube or a Qube Related Entity could satisfy;

as described in clause 5 of the Variation to the Undertaking.

NIL